

BOBCAT COMPANY PRICE PAGES

NA EXCAVATORS - ATTACHMENTS



Please note the following when using Bobcat Price Pages:

- All prices are shown in U.S. dollars.
- Check BobcatNET Pricing Homepage for current Canadian exchange rate.
- For current Dealer Installed Accessories pricing, reference BobQuote or Dealer Parts Department.
- Prices and specifications are subject to change without notice.

7178041THE FOLLOWING UPDATES HAVE BEEN MADE TO THIS DOCUMENT:

DATE	DESCRIPTION OF CHANGE
12/22/10	Attachments have been updated for the increased flow capabilities of the E60.
03/01/11	Updated Trencher part number.
04/22/11	Updated attachment approvals for the E55.
11/17/11	Updated attachment approvals for the E26.
05/03/12	Added PCF34 Plate Compactor and updated rock bit part numbers.
03/15/13	Added Smooth Lip Trenching Buckets and updated Trenching Bucket part numbers. Removed PC 60 Plate Compactor.
12/12/13	Removed Model 30 and Model 40 Rotating Grapple.
04/23/14	Added Pro Clamp™ System.
06/09/14	Added 30" and 40" Flail Mower.
09/09/14	Updated attachment approvals for the E20.
01/01/15	Effective Thursday, January 1 st , 2015 Bobcat Company has adjusted the SLP of select options and power units.
07/01/15	Effective Wednesday, July 1 st 2015, Bobcat Company has adjusted the SLP of select attachment options.
02/08/16	Removed Discontinued Trenching Buckets with PN's: 6534120, 6534121, 6534122, 6536055, 6536100, 6536130
02/26/16	Added Auger shaft diameters.
07/01/16	Effective Friday, July 1 st 2016, Bobcat Company has adjusted the SLP of select attachment options.
01/06/17	Added note about non-compatible E42-E55 hydra-tilt and Pro Clamp™
4/17/17	Removed PN 7275231 & 6680073 Laser Transmitter
6/15/17	Updated new Rippers
7/10/17	Effective Monday, July 10 st 2017, Bobcat Company has adjusted the SLP of select attachment options.
9/15/17	Trenching and Grading buckets replaced Class III, IV, and new Class VI buckets for R-Series E85.
12/20/17	Trenching and Grading buckets replaced Class II and new Class V bucket for E55 & E63. Added Caps and field installed Clamp for E85 R-Series.
01/01/18	Effective Thursday, January 1 st , 2018 Bobcat Company has adjusted the SLP of select options and power units.
01/31/18	Replaced E26 breaker hose kit 7117832 with kit 7114762 that contains longer hoses
05/15/18	Added E85R Tilting/Grading bucket
11/29/18	NB Breaker line added

****Specification(s) are based on engineering calculations and are not actual measurements. Specification(s) are provided for comparison purposes only and are subject to change without notice. Specification(s) for your individual Bobcat equipment will vary based on normal variations in design, manufacturing, operating conditions, and other factors.***

BOBCAT COMPANY PRICE PAGES

NA EXCAVATORS – ATTACHMENTS

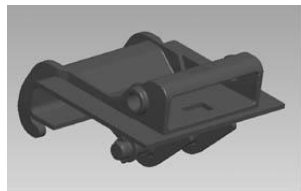


Please note the following when using Bobcat Price Pages:

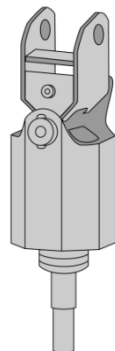
- All prices are shown in U.S. dollars.
- Check BobcatNET Pricing Homepage for current Canadian exchange rate.
- For current Dealer Installed Accessories pricing, reference BobQuote or Dealer Parts Department.
- Prices and specifications are subject to change without notice.

AUGER

BOBCAT EXCAVATOR ATTACHMENT



Auger Interface



Auger Drive Unit

QUICK SPECS

	<u>Model 10</u>	<u>Model 15C</u>	<u>Model 15H</u>	<u>Model 30C</u>	<u>Model 30H</u>	<u>Model 35PH</u>	<u>Model 50PH</u>
Ship Weight (Auger Drive)	191 lbs.	245 lbs.	241 lbs.	263 lbs.	257 lbs.	325 lbs.	325 lbs.
Ship Weight (Coupler & Interface).....	111 lbs.	111 lbs.	111 lbs.	111 lbs.	111 lbs.	111 lbs.	111lbs.
Operating Weight (less bit).....	242 lbs.	296 lbs.	292 lbs.	314 lbs.	308 lbs.	376 lbs.	376lbs.
Digging Depth (without extensions).....	58"	62"	62"	62"	62"	72"	72"
Shaft Diameter - Round	2.5"	2.5"	-	2.5"	-	-	-
Shaft Diameter - Hex	-	2.0"	2.0"	2.0"	2.0"	2.5"	2.5"
RPM							
@ 8 gpm (30 L/min.).....	48 rpm						
@ 12 gpm (45 L/min.).....		57 rpm	57 rpm				
@ 17 gpm (64 L/min.).....	102 rpm	80 rpm	80 rpm	41 rpm	41 rpm		
@ 18 gpm (68 L/min.).....						46 rpm	36 rpm
@ 21 gpm (70 L/min.).....		99 rpm	99 rpm	51 rpm	51 rpm		
@ 22 gpm (83 L/min.).....						56 rpm	45 rpm
@ 23 gpm (87 L/min.).....		109 rpm	109 rpm	56 rpm	56 rpm		
@ 26 gpm (98 L/min.).....						67 rpm	53 rpm
@ 30 gpm (114 L/min.).....				70 rpm	70 rpm	77 rpm	61 rpm
@ 32 gpm (121 L/min.).....						82 rpm	65 rpm
@ 34 gpm (129 L/min.).....						87 rpm	69 rpm
@ 36 gpm (136 L/min.).....						92 rpm	73 rpm
@ 37 gpm (140 L/min.).....				90 rpm	90 rpm		
@ 38 gpm (144 L/min.).....						98 rpm	77 rpm
Torque							
@ 2000 psi (19,788 kPa).....	1021ft.lb. (1523 Nm)	1300 ft.lb. (1763 Nm)	1300 ft.lb. (1763 Nm)	2520 ft.lb. (3417 Nm)	2520 ft.lb. (3417 Nm)	2387 ft.lb. (3237 Nm)	3023ft.lb. (4100 Nm)
@ 2400 psi (16,547 kPa).....	1225 ft.lb. (1661 Nm)	1560 ft.lb. (2115 Nm)	1560 ft.lb. (2115 Nm)	3024 ft.lb. (4100 Nm)	3024 ft.lb. (4100 Nm)	2864 ft.lb. (3884 Nm)	3628 ft.lb. (4920 Nm)
@ 2600 psi (17,926 kPa).....						3103 ft.lb. (4208 Nm)	3931ft.lb. (5330 Nm)
@ 2700 psi (18,616 kPa).....	1378 ft.lb. (1868 Nm)	1775 ft.lb. (2379 Nm)	1775 ft.lb. (2379 Nm)	3402 ft.lb. (4213 Nm)	3402 ft.lb. (4213 Nm)		
@ 3000 psi (20,684 kPa).....	1532 ft.lb. (2077 Nm)	1950 ft.lb. (2644 Nm)	1950 ft.lb. (2644 Nm)	3780 ft.lb. (5125 Nm)	3780 ft.lb. (5125 Nm)		
@ 3200 psi (22,753 kPa).....						3819 ft.lb. (5179 Nm)	3023ft.lb. (4100 Nm)
@ 3300 psi (22,753 kPa).....		2415 ft.lb. (2908 Nm)	2415 ft.lb. (2908 Nm)	4158 ft.lb. (5638 Nm)	4158 ft.lb. (5638 Nm)		

Prices and Specifications

Excavator Attachments

North American Suggested List Prices

Subject to Change Without Notice

All Prices in U.S. Dollars

2017 Price Book

Check BobcatNET Pricing Homepage for current Canadian exchange rate.

AUGER

BOBCAT EXCAVATOR ATTACHMENT

@ 3500 psi (24,132 kPa)..... 2275 ft.lb. 2275 ft.lb. 4410 ft.lb. 4410 ft.lb. 4177 ft.lb. 5291 lb.
(3084 Nm) (3084 Nm) (5979 Nm) (5979 Nm) (5664 Nm) (7175 Nm)

PART NUMBER	ATTACHMENT DESCRIPTION	SLP IN US \$
-------------	------------------------	--------------

(322, 323, 324, 325, 328, 425) (E20, E26)

6808799 MODEL 10 AUGER DRIVE UNIT..... \$1,384.00
(If installing on a 322-324 or E20 must order all three of the following: bit, Bolt-On X-Change and X-Change Auger Interface listed below.)
(If installing on a 325, 328 or E26 equipped with X-Change, must order bit and X-Change Auger Interface listed below.)

(325, 328, 329, 331, 331E, 334, 335, 337, 341, 425, 430, 435) (E26, E32, E35, E42, E45, E50, E55, E63) (E80, E85)

6809442 MODEL 15C AUGER DRIVE UNIT..... \$1,696.00
(Must order Bit and if installing auger on an X-Change equipped excavator, must also order the interface P/N 6817100 listed below.)
(Auger drive unit is shipped with a 7/8" round bit retention pin, if used in conjunction with a hex bit a 5/8" Pin Kit P/N 6809733 is required.)

7145345 MODEL 15H AUGER HEX DRIVE UNIT..... \$1,696.00
(Must order Bit and if installing auger on an X-Change equipped excavator, must also order the interface P/N 6817100 listed below.)

6809445 MODEL 30C AUGER DRIVE UNIT..... \$2,217.00
(Must order Bit and if installing auger on an X-Change equipped excavator, must also order the interface P/N 6817100 listed below.)
(Auger drive unit is shipped with a 7/8" round bit retention pin, if used in conjunction with a hex bit a 5/8" Pin Kit P/N 6809733 is required.)

7138264 MODEL 30H AUGER HEX DRIVE UNIT..... \$2,217.00
(Must order Bit and if installing auger on an X-Change equipped excavator, must also order the interface P/N 6817100 listed below.)

NOTES:

- 1) Extendable Arm must be pinned in the retracted position to use hydraulic attachments.
- 2) Must order Hose Kit P/N 7214499 (Qty. 2) for E42 Long Arm, E45 long Arm, E50 Long Arm, E55 and E55 Extendable Arm

(E42, E45, E50, E55, E63, E80, E85)

7220280 35PH AUGER DRIVE UNIT..... \$3,590.00
(Must order Bit and if installing on an X-Change equipped excavator, must also order the interface P/N 6817100 listed below) (Auger Drive units is shipped with bit retention pin)

(E42, E45, E50, E55, E63, E80, E85)

7227984 50PH AUGER DRIVE UNIT..... \$4,110.00
(Must order Bit and if installing on an X-Change equipped excavator, must also order the interface P/N 6817100 listed below) (Auger Drive units is shipped with bit retention pin)

PART NUMBER	DEALER INSTALLED ACCESSORIES – ORDER FROM SALES DESCRIPTION	SLP IN US \$
-------------	---	--------------

6727180 BOLT-ON X-CHANGE, 322 – 324, E20..... \$234.00
(Must also order Bit and PN 6817100)

6817100 X-CHANGE AUGER INTERFACE, 322 – 435, E26 – E63..... \$333.00

7169329 MOUNTING FRAME, E80, E85..... \$765.00

7307176 PIN-ON MOUNTING CAP, E85 R-SERIES..... \$754.00
(Mounting cap uses 55mm pins)

7214499 HOSE KIT FOR E42 LONG ARM, E45 LONG ARM, E50 LONG ARM, E55 & E55 EXTENDABLE ARM..... PARTS \$_____
(Must order Qty. 2)

AUGER

BOBCAT EXCAVATOR ATTACHMENT

PART NUMBER	DEALER INSTALLED ACCESSORIES – ORDER FROM PARTS DESCRIPTION
-------------	---

For current Dealer Installed Accessories pricing, reference BobQuote or Dealer Parts Department.

AUGER DRIVE & BIT RECOMMENDATIONS

Model 10 Augers on a 322 – 324, E20 Excavator—Recommended bit size 6" – 18"

Model 10 Augers on 325/328, E26 Excavators—Recommended bit size 6" – 36"

Model 15C/H & 30C/H Augers on 325-435, E26-E63 Excavators—Recommended bit size 6" – 36"

Auger bit combinations should be used as a guideline. Recommendations are based upon average digging conditions.

LIGHT DUTY AUGER BITS

*Used with 322 – 324, E20 and Model 10 Auger
 White, round Drive, 45" Length, Single Flight.*

6679574	6" BIT (Ship Weight 45 lbs.)	PARTS	\$ _____
6679575	9" BIT (Ship Weight 52 lbs.)	PARTS	\$ _____
6679576	12" BIT (Ship Weight 100 lbs.)	PARTS	\$ _____
6679577	15" BIT (Ship Weight 120 lbs.)	PARTS	\$ _____
6679578	18" BIT (Ship Weight 79 lbs.)	PARTS	\$ _____
6679579	24" BIT (Ship Weight 144 lbs.)	PARTS	\$ _____
6679580	30" BIT (Ship Weight 124 lbs.)	PARTS	\$ _____
6679581	36" BIT (Ship Weight 165 lbs.)	PARTS	\$ _____

AUGER

BOBCAT EXCAVATOR ATTACHMENT

PART NUMBER	DEALER INSTALLED ACCESSORIES – ORDER FROM PARTS DESCRIPTION
-------------	---

For current Dealer Installed Accessories pricing, reference BobQuote or Dealer Parts Department.

STANDARD AUGER BITS & ACCESSORIES

Charcoal Color, Round Drive, 49" Length, Double Flight, Variable Tooth Angle: 40° or 50°

6666891	6" BIT PARTS	\$ _____
	(Ship Weight 60 lbs.)	
6666892	9" BIT PARTS	\$ _____
	(Ship Weight 91 lbs.)	
6666893	12" BIT PARTS	\$ _____
	(Ship Weight 128 lbs.)	
6666894	15" BIT PARTS	\$ _____
	(Ship Weight 119 lbs.)	
6666895	18" BIT PARTS	\$ _____
	(Ship Weight 160 lbs.)	
6666896	24" BIT PARTS	\$ _____
	(Ship Weight 203 lbs.)	
6666897	30" BIT PARTS	\$ _____
	(Ship Weight 275 lbs.)	
6666898	36" BIT (Model 15 & 30) PARTS	\$ _____
	(Ship Weight 380 lbs.)	
6666899	18" TREE PLANTING BIT PARTS	\$ _____
	(Ship Weight 140 lbs.)	
6666900	24" TREE PLANTING BIT PARTS	\$ _____
	(Ship Weight 162 lbs.)	
6666901	30" TREE PLANTING BIT PARTS	\$ _____
	(Ship Weight 236 lbs.)	
6666902	36" TREE PLANTING BIT PARTS	\$ _____
	(Ship Weight 305 lbs.)	

Standard Auger Bit Accessories

6679806	48" ADJUSTABLE ROUND EXTENSION PARTS	\$ _____
	(For Model 10, 15, 15C, 30 and 30C Augers) (6" and 9" bits will not allow the extension to telescope, only works in the top position) (Ship Weight 82 lbs.)	
6679826	24" ADJUSTABLE ROUND EXTENSION PARTS	\$ _____
	(For Model 10, 15, 15C, 30 and 30C Augers) (6" and 9" bits will not allow the extension to telescope, only works in the top position) (Ship Weight 44 lbs.)	
6679825	14" ROUND EXTENSION PARTS	\$ _____
	(For Model 10, 15, 15C, 30 and 30C Augers) (Ship Weight 25 lbs.)	

AUGER

BOBCAT EXCAVATOR ATTACHMENT

PART NUMBER	DEALER INSTALLED ACCESSORIES – ORDER FROM PARTS DESCRIPTION
-------------	---

For current Dealer Installed Accessories pricing, reference BobQuote or Dealer Parts Department.

HEAVY DUTY AUGER BITS & ACCESSORIES *Orange Color, Hex Drive, 42" Length, Single Flight*

6674957	6" BIT PARTS \$ _____ (If installed on a 15C or 30C Auger drive unit, a 5/8" Pin Kit P/N 6809733 is required) (Ship Weight 46 lbs.)	
6674958	9" BIT PARTS \$ _____ (If installed on a 15C or 30C Auger drive unit, a 5/8" Pin Kit P/N 6809733 is required) (Ship Weight 59 lbs.)	
6674959	12" BIT PARTS \$ _____ (If installed on a 15C or 30C Auger drive unit, a 5/8" Pin Kit P/N 6809733 is required) (Ship Weight 76 lbs.)	
6674960	16" BIT PARTS \$ _____ (If installed on a 15C or 30C Auger drive unit, a 5/8" Pin Kit P/N 6809733 is required) (Ship Weight 97 lbs.)	
6675034	18" BIT PARTS \$ _____ (If installed on a 15C or 30C Auger drive unit, a 5/8" Pin Kit P/N 6809733 is required) (Ship Weight 112 lbs.)	
6674961	20" BIT PARTS \$ _____ (If installed on a 15C or 30C Auger drive unit, a 5/8" Pin Kit P/N 6809733 is required) (Ship Weight 117 lbs.)	
6674962	24" BIT PARTS \$ _____ (If installed on a 15C or 30C Auger drive unit, a 5/8" Pin Kit P/N 6809733 is required) (Ship Weight 151 lbs.)	
6674963	30" BIT PARTS \$ _____ (If installed on a 15C or 30C Auger drive unit, a 5/8" Pin Kit P/N 6809733 is required) (Ship Weight 193 lbs.)	
6674964	36" BIT PARTS \$ _____ (If installed on a 15C or 30C Auger drive unit, a 5/8" Pin Kit P/N 6809733 is required) (Ship Weight 270 lbs.)	
6674965	42" BIT PARTS \$ _____ (If installed on a 15C or 30C Auger drive unit, a 5/8" Pin Kit P/N 6809733 is required) (Ship Weight 302 lbs.)	

Heavy Duty Auger Bit Accessories/Rock Auger Bit Accessories

6809733	5/8" (.625) PIN KIT PARTS \$ _____ (Used for retention of hex bits on 15C and 30C Auger drive units) (Ship Weight 11 lbs.)	
6679807	48" ADJUSTABLE HEX EXTENSION PARTS \$ _____ (For Model 15H, 15C, 30H and 30C Augers) (Ship Weight 48 lbs.)	
6662876	24" ADJUSTABLE HEX EXTENSION PARTS \$ _____ (For Model 15H, 15C, 30H and 30C Augers) (Ship Weight 33 lbs.)	
6662874	ROUND SHAFT TO HEX BIT ADAPTER, CAST PARTS \$ _____ (For Model 15 & 30 Augers with Round Output Shaft) (Ship Weight 19 lbs.)	
6662875	HEX SHAFT TO ROUND BIT ADAPTER, CAST PARTS \$ _____ (For Model 15H, 15C, 30H and 30C Augers with Hex Output Shaft) (Ship Weight 20 lbs.)	
7137091	HEX SHAFT TO ROUND BIT ADAPTER, SLEEVE PARTS \$ _____ (For Model 15H, 15C, 30H and 30C Augers w/ Hex Output Shaft) (5/8" Pin Kit P/N 6809733 is required.) (Sleeve slides over hex shaft, converting it to round) (Ship Weight 3 lbs.)	
7243729	48" ADJUSTABLE HEX EXTENSION PARTS \$ _____ (For 35PH & 50PH Auger Drives) (Shipping Weight 105lbs.)	

AUGER

BOBCAT EXCAVATOR ATTACHMENT

PART NUMBER	DEALER INSTALLED ACCESSORIES – ORDER FROM PARTS DESCRIPTION
-------------	---

For current Dealer Installed Accessories pricing, reference BobQuote or Dealer Parts Department.

ROCK AUGER BITS & ACCESSORIES *White Color, Hex Shaft, 42" Length, Single Flight*

7169665	6" BIT PARTS	\$ _____
	(Ship Weight 64 lbs.)	
7169666	9" BIT PARTS	\$ _____
	(Ship Weight 78 lbs.)	
7169667	12" BIT PARTS	\$ _____
	(Ship Weight 102 lbs.)	
7169668	16" BIT PARTS	\$ _____
	(Ship Weight 123 lbs.)	
7169669	18" BIT PARTS	\$ _____
	(Ship Weight 149 lbs.)	
7169670	20" BIT PARTS	\$ _____
	(Ship Weight 152 lbs.)	
7169671	24" BIT PARTS	\$ _____
	(Ship Weight 195 lbs.)	
7169672	30" BIT PARTS	\$ _____
	(Ship Weight 225 lbs.)	

Rock Auger Bit Accessories – See Heavy Duty Auger Bit Accessories

HEAVY DUTY AUGER BITS – 35/50PH AUGER DRIVE

7243233	8" BIT PARTS	\$ _____
	(Ship Weight 115 lbs.)	
7243234	12" BIT PARTS	\$ _____
	(Ship Weight 130 lbs.)	
7243235	18" BIT PARTS	\$ _____
	(Ship Weight 165 lbs.)	
7243236	24" BIT PARTS	\$ _____
	(Ship Weight 225 lbs.)	
7243237	30" BIT PARTS	\$ _____
	(Ship Weight 295 lbs.)	
7243238	36" BIT PARTS	\$ _____
	(Ship Weight 350 lbs.)	
7243239	48" BIT PARTS	\$ _____
	(Ship Weight 495 lbs.)	

ROCK AUGER BITS – 35/50PH AUGER DRIVE

7243240	8" BIT PARTS	\$ _____
	(Ship Weight 118 lbs.)	
7243241	12" BIT PARTS	\$ _____
	(Ship Weight 130 lbs.)	
7243242	18" BIT PARTS	\$ _____
	(Ship Weight 165 lbs.)	
7243243	24" BIT PARTS	\$ _____
	(Ship Weight 210 lbs.)	
7243244	30" BIT PARTS	\$ _____
	(Ship Weight 300 lbs.)	

AUGER

BOBCAT EXCAVATOR ATTACHMENT

PART DEALER INSTALLED ACCESSORIES – ORDER FROM PARTS
NUMBER DESCRIPTION

For current Dealer Installed Accessories pricing, reference BobQuote or Dealer Parts Department.

Non-Current Auger Information

6812766	X-CHANGE AUGER COUPLER..... PARTS \$ ____ (X-Change Auger Coupler and X-Change Auger Interface P/N 6817100 needed to mount non-current Augers to X-Change equipped excavators.) See Serial Number detail below: Model 15 S/N 187411205 and below Model 30 S/N 187606002 and below Model 15H S/N 187500894 and below Model 30H S/N 187700890 and below	
6709662	PIN-ON AUGER COUPLER..... PARTS \$ ____ (Needed to mount Model 15, 15H, 30, and 30H Auger Drives to 325, 328, 331, 331E, 334 and 430 excavators with pin mounting—excavators not equipped with X-Change.) See Serial Number detail below: Model 15 S/N 187411205 and below Model 30 S/N 187606002 and below Model 15H S/N 187500894 and below Model 30H S/N 187700890 and below	

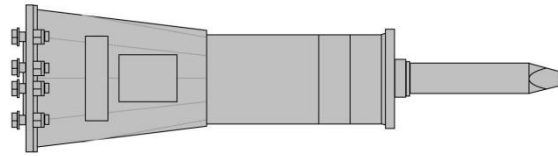
DESTINATION CHARGE/FUEL SURCHARGE
 Refer to BobQuote or BobcatNET>>Other Resources>>Pricing Homepage for current Destination and Fuel Charges.

ATTACHMENT	ASSEMBLY REQUIRED	INSTALLATION
		TIME (HRS.)

Auger.....Assemble drive unit to coupler & interface and install bit.....		0.5
---	--	------------

BREAKER, HYDRAULIC

BOBCAT EXCAVATOR ATTACHMENT



QUICK SPECS

	<u>HB280</u>	<u>HB680</u>	<u>HB880</u>	<u>HB980</u>
Operating Weight (nail point & X-Change or pin-on cap)	160 lbs.	632 lbs.	786 lbs.	1082 lbs.
Impact Energy Class.....	60 ft. lb.	150 ft. lb.	300 ft. lb.	500 ft. lb.
CIMA Tool Energy Rating.....	59 ft. lb.	143 ft. lb.	207 ft. lb.	282 ft. lb.
Blows per Minute.....	1290 @	1340 @	1310 @	1450 @
	6 gpm	13 gpm	17 gpm	21 gpm
Flow Requirements.....	3-6 gpm	7-13 gpm	8-17 gpm	12-21 gpm
Tool Working Length.....	10.6"	13.0"	13.0"	14.0"
Tool Diameter.....	1.5"	2.2"	2.6"	2.8"
<i>Estimated Breaker Performance with Concrete</i>				
Recommended Working Thickness...	1 - 4"	2 - 4"	4 - 10"	6 - 14"
Demolished Volume per Hour				
Non-Reinforced Concrete.....	1 - 2 cu. yd	1 - 4 cu. yd	4 - 12 cu. yd	5 - 15 cu. yd
Reinforced Concrete.....	1 - 2 cu. yd	1 - 3 cu. yd	1 - 4 cu. yd	2 - 6 cu. yd
	<u>HB1180</u>	<u>HB1380</u>	<u>HB2380</u>	
Operating Weight (nail point & X-Change or pin-on cap)	1130 lbs.	1011 lbs.	1065 lbs.	
Impact Energy Class.....	750 ft. lb.	850 ft. lb.	1000 ft. lb.	
CIMA Tool Energy Rating.....	384 ft. lb.	515 ft. lb.	700 ft. lb.	
Blows per Minute.....	1280 @	1230 @	910 @	
	26 gpm	32 gpm	33 gpm	
Flow Requirements.....	15-26 gpm	17-32 gpm	20-33 gpm	
Tool Working Length.....	16.0"	17.0"	18.0"	
Tool Diameter.....	3.0"	3.4"	3.8"	
<i>Estimated Breaker Performance with Concrete</i>				
Recommended Working Thickness...	8 - 16"	10-18"	12 - 20"	
Demolished Volume per Hour				
Non-Reinforced Concrete.....	6 - 15 cu. yd	8 - 18 cu. yd	10 - 20 cu. yd	
Reinforced Concrete.....	2 - 7 cu. yd	3 - 8 cu. yd	4 - 9 cu. yd	

BREAKER, HYDRAULIC

BOBCAT EXCAVATOR ATTACHMENT

PART NUMBER	ATTACHMENT DESCRIPTION	SLP IN US \$
-------------	------------------------	--------------

(E10, 418)		
7133202	HB280 BREAKER.....	\$4,603.00
	(Includes Nail Point, gauge tool, retainer clip and hose protector)	
	(Must also order hose kit and mounting cap)	
	(If used on 316 excavator, must also order temperature warning kit p/n 7140103 and coupler kit p/n 7170567)	

PART NUMBER	DEALER INSTALLED ACCESSORIES – ORDER FROM SALES DESCRIPTION	SLP IN US \$
-------------	---	--------------

<u>Accessories – HB280</u>		
7170566	HOSE KIT FOR 316 & 418.....	\$183.00
7160677	PIN-ON MOUNTING CAP - 418	\$91.00

PART NUMBER	DEALER INSTALLED ACCESSORIES – ORDER FROM PARTS DESCRIPTION	
-------------	---	--

For current Dealer Installed Accessories pricing, reference BobQuote or Dealer Parts Department.

7133409	PIN-ON MOUNTING CAP - 316.....	PARTS \$ _____
	(If machine bucket pins have a round head, order square head pins p/n NTS 3-51110, qty 2)	
7170567	COUPLER KIT FOR 316.....	PARTS \$ _____
7140103	TEMPERATURE WARNING KIT.....	PARTS \$ _____
	(Required when operating breaker with 316 excavator)	

<u>Breaker Tools – HB280</u>		
7144652	BLUNT	PARTS \$ _____
7144649	CROSS CUT CHISEL.....	PARTS \$ _____
7144650	IN-LINE CHISEL.....	PARTS \$ _____
7144651	NAIL POINT.....	PARTS \$ _____

BREAKER, HYDRAULIC

BOBCAT EXCAVATOR ATTACHMENT

PART NUMBER	DESCRIPTION	ATTACHMENT	SLP IN US \$
(322, 323, 325, 328, 425) (E20, E26)			
7113419	HB680 BREAKER		\$4,496.00
	(Includes Nail Point, fixing cap bolts, cradle, isolation mount, gauge tool, retainer clip and hose protector) (Must also order Mounting Cap and Hose Kit)		

PART NUMBER	DESCRIPTION	DEALER INSTALLED ACCESSORIES – ORDER FROM SALES	SLP IN US \$
<u>Mounting Frames – HB680</u>			
7117752	PIN-ON MOUNTING CAP – 322, 323, E20		\$284.00
	(Must also order a hose kit, P/N 7117823)		
7113656	X-CHANGE MOUNTING CAP – 325, 328, 425, E26		\$467.00
	(Must also order appropriate hose kit, P/N 7117823 or 7117832)		
<u>Accessories – HB680</u>			
7117823	HOSE KIT – 322, 323, 325, 425, E20, E26		\$198.00
	(Includes hoses and quick couplers)		
7114762	HOSE KIT – 325/331 Long Arm, 328, E26 Long Arm		\$198.00
	(Includes hoses and quick couplers)		

PART NUMBER	DESCRIPTION	DEALER INSTALLED ACCESSORIES – ORDER FROM PARTS
-------------	-------------	---

For current Dealer Installed Accessories pricing, reference BobQuote or Dealer Parts Department.

<u>Breaker Tools – HB680</u>		
7144681	BLUNT	PARTS \$ _____
7144676	CONICAL POINT (MOIL)	PARTS \$ _____
7144679	CROSS CUT ASPHALT	PARTS \$ _____
7144673	CROSS CUT CHISEL	PARTS \$ _____
7144677	CROSS CUT WIDE CHISEL	PARTS \$ _____
7144680	IN-LINE ASPHALT	PARTS \$ _____
7144674	IN-LINE CHISEL	PARTS \$ _____
7144678	IN-LINE WIDE CHISEL	PARTS \$ _____
7149302	NAIL POINT	PARTS \$ _____
7144682	TAMPING	PARTS \$ _____

BREAKER, HYDRAULIC

BOBCAT EXCAVATOR ATTACHMENT

PART NUMBER	ATTACHMENT DESCRIPTION	SLP IN US \$
-------------	------------------------	--------------

(325, 328, 329, 331, 331E, 334, 425, 430) (E32, E35)

7113420	HB880 BREAKER (Includes Nail Point, fixing cap bolts, cradle, isolation mount, gauge tool, retainer clip and hose protector) (Must also order X-Change Mounting Cap and Hose Kit) (Must also order Auxiliary Hydraulics p/n 7126596 if using with 329 excavator) Approved for use with E60 s/n AGSZ11320 & below	\$6,369.00
---------	---	-------------------

NOTE: Extendable Arm must be pinned in the retracted position to use hydraulic attachments.

PART NUMBER	DEALER INSTALLED ACCESSORIES – ORDER FROM SALES DESCRIPTION	SLP IN US \$
-------------	---	--------------

Mounting Frame – HB880

7113657	X-CHANGE MOUNTING CAP (Must also order a hose kit)	\$482.00
---------	--	-----------------

Accessories – HB880

7117834	HOSE KIT – 325, 329, 331, 331E, 425, 430 Extendable Arm (Includes hoses and quick couplers)	\$198.00
6728963	HOSE KIT – 325 Long Arm , 328, E32, E35 (Includes hoses and quick couplers)	\$198.00
7114762	HOSE KIT – 331 Long Arm, 334, 430 Long Arm (Includes hoses and quick couplers)	\$198.00
7180019	HOSE KIT – E32 Long Arm, E35 Long Arm (Includes hoses and quick couplers)	\$239.00
7175244	HOSE KIT – E60 (Includes hoses and quick couplers)	\$225.00

PART NUMBER	DEALER INSTALLED ACCESSORIES – ORDER FROM PARTS DESCRIPTION
-------------	---

For current Dealer Installed Accessories pricing, reference BobQuote or Dealer Parts Department.

Breaker Tools – HB880

7144696	BLUNT	PARTS	\$	
7144691	CONICAL POINT (MOIL)	PARTS	\$	
7144694	CROSS CUT ASPHALT	PARTS	\$	
7144688	CROSS CUT CHISEL	PARTS	\$	
7144692	CROSS CUT WIDE CHISEL	PARTS	\$	
7144695	IN-LINE ASPHALT.....	PARTS	\$	
7144689	IN-LINE CHISEL.....	PARTS	\$	
7144693	IN-LINE WIDE CHISEL	PARTS	\$	
7144690	NAIL POINT.....	PARTS	\$	
7144697	TAMPING.....	PARTS	\$	

BREAKER, HYDRAULIC

BOBCAT EXCAVATOR ATTACHMENT

PART NUMBER	ATTACHMENT DESCRIPTION	SLP IN US \$
-------------	------------------------	--------------

(329, 331, 331E, 334, 335, 337, 341, 430, 435) (E32, E35, E42, E45, E50, E55)

7113421	HB980 BREAKER (Includes Nail Point, fixing cap bolts, cradle, isolation mount, gauge tool, retainer clip and hose protector) (Must also order X-Change Mounting Cap and Hose Kit) (Must also order Auxiliary Hydraulics p/n 7126596 if using with 329 excavator) Approved for use with E60 s/n AGSZ11320 & below	\$7,978.00
---------	---	-------------------

NOTE: Extendable Arm must be pinned in the retracted position to use hydraulic attachments.

PART NUMBER	DEALER INSTALLED ACCESSORIES – ORDER FROM SALES DESCRIPTION	SLP IN US \$
-------------	---	--------------

Mounting Frame –HB980

7113657	X-CHANGE MOUNTING CAP (Must also order a hose kit)	\$482.00
---------	--	-----------------

Accessories –HB980

7117834	HOSE KIT – 329, 331, 331E, 430, 430 Extendable Arm (Includes hoses and quick couplers)	\$198.00
7114762	HOSE KIT – 331 Long Arm, 334, 337, 430 Long Arm (Includes hoses and quick couplers)	\$198.00
6728967	HOSE KIT – 337, 341, 435, E50 – ALL WITH LONG ARM; E55 – ALL (Includes hoses and quick couplers)	\$198.00
6728963	HOSE KIT – 335, 435, E32, E35 (Includes hoses and quick couplers)	\$198.00
7180019	HOSE KIT – E32, E35, E42, E45 – ALL WITH LONG ARM (Includes hoses and quick couplers)	\$239.00
7114762	HOSE KIT – E42, E45, E50 (Includes hoses and quick couplers)	\$198.00
7175244	HOSE KIT – E60 (Includes hoses and quick couplers)	\$225.00

PART NUMBER	DEALER INSTALLED ACCESSORIES – ORDER FROM PARTS DESCRIPTION
-------------	---

For current Dealer Installed Accessories pricing, reference BobQuote or Dealer Parts Department.

Breaker Tools –HB980

7144707	BLUNT	PARTS	\$ _____
7144702	CONICAL POINT (MOIL)	PARTS	\$ _____
7144705	CROSS CUT ASPHALT	PARTS	\$ _____
7144699	CROSS CUT CHISEL	PARTS	\$ _____
7144703	CROSS CUT WIDE CHISEL	PARTS	\$ _____
7144706	IN-LINE ASPHALT.....	PARTS	\$ _____
7144700	IN-LINE CHISEL.....	PARTS	\$ _____
7144704	IN-LINE WIDE CHISEL	PARTS	\$ _____
7144701	NAIL POINT.....	PARTS	\$ _____
7144708	TAMPING.....	PARTS	\$ _____

BREAKER, HYDRAULIC

BOBCAT EXCAVATOR ATTACHMENT

PART NUMBER	ATTACHMENT DESCRIPTION	SLP IN US \$
-------------	------------------------	--------------

(335, 337, 341, 435, 442) (E42, E45, E50, E55, E60*, E63, E80, E85)
7115923 HB1180 BREAKER..... \$10,490.00
 (Includes Nail Point, fixing cap bolts, cradle, isolation mount, gauge tool, retainer clip and hose protector) (Must also order X-Change Mounting Cap and Hose Kit)
 *Approved for use with E60 s/n AGSZ11321 & above

PART NUMBER	DEALER INSTALLED ACCESSORIES – ORDER FROM SALES DESCRIPTION	SLP IN US \$
-------------	---	--------------

Mounting Frame –HB1180

(335, 337, 341, 435) (E42, E45, E50, E55, E60, E63)
7117325 X-CHANGE MOUNTING CAP..... \$563.00
 (Must also order a hose kit)

(E80, E85)
7168502 PIN-ON MOUNTING CAP..... \$731.00
 (Must also order hose kit, P/N 7176608, mounting cap uses 45mm pins)

(E85 R-Series)
7307177 PIN-ON MOUNTING CAP..... \$720.00
 (Mounting cap uses 55mm pins)

Accessories –HB1180

7114762 HOSE KIT – 337, E42, E45, E50..... \$198.00
6728967 HOSE KIT – 337, 341, 435, E50 - ALL WITH LONG ARM; E55 – ALL..... \$198.00
6728963 HOSE KIT – 335, 435..... \$198.00
7130290 HOSE KIT – 442..... \$240.00
7180019 HOSE KIT – E42, E45 - ALL WITH LONG ARM..... \$239.00
7176608 HOSE KIT – E60, E63, E80, E85..... \$279.00

PART NUMBER	DEALER INSTALLED ACCESSORIES – ORDER FROM PARTS DESCRIPTION	
-------------	---	--

For current Dealer Installed Accessories pricing, reference BobQuote or Dealer Parts Department.

(442)
6681919 PIN-ON MOUNTING CAP..... PARTS \$ _____
 (Must also order hose kit, P/N 7130290)

Breaker Tools –HB1180

7144718 BLUNT..... PARTS \$ _____
7144713 CONICAL POINT (MOIL)..... PARTS \$ _____
7144716 CROSS CUT ASPHALT..... PARTS \$ _____
7144710 CROSS CUT CHISEL..... PARTS \$ _____
7144714 CROSS CUT WIDE CHISEL..... PARTS \$ _____
7144717 IN-LINE ASPHALT..... PARTS \$ _____
7144711 IN-LINE CHISEL..... PARTS \$ _____
7144712 NAIL POINT..... PARTS \$ _____
7144719 TAMPING..... PARTS \$ _____
7144715 IN-LINE WIDE CHISEL..... PARTS \$ _____

BREAKER, HYDRAULIC

BOBCAT EXCAVATOR ATTACHMENT

PART NUMBER	DESCRIPTION	ATTACHMENT	SLP IN US \$
-------------	-------------	------------	--------------

(442) (E60*, E63, E80, E85)			
7157576	HB1380 BREAKER (Includes Nail Point, fixing cap bolts, cradle, isolation mount, gauge tool, retainer clip and hose protector) (Must also order Loader Mounting Frame and Hose Kit) (Special Applications Kit must be used when operating a Hydraulic Breaker) *Approved for use with E60 s/n AGSZ11321 & above		\$13,017.00

PART NUMBER	DESCRIPTION	SLP IN US \$
-------------	-------------	--------------

Mounting Frame –HB1380

(442)			
7145372	PIN-ON MOUNTING CAP (Must also order hose kit, P/N 7130290)		\$619.00
(E60, E63)			
7117325	X-CHANGE MOUNTING CAP (Must also order hose kit, P/N 7176608)		\$563.00
(E80, E85)			
7168502	PIN-ON MOUNTING CAP (Must also order hose kit, P/N 7176608, mounting cap uses 45mm pins)		\$731.00
(E85 R-Series)			
7307177	PIN-ON MOUNTING CAP (Mounting cap uses 55mm pins)		\$720.00

Accessories – HB1380

7130290	HOSE KIT-442 (Includes hoses and quick couplers)		\$240.00
7176608	HOSE KIT-E60, E63, E80, E85 (Includes hoses and quick couplers)		\$279.00

PART NUMBER	DESCRIPTION	SLP IN US \$
-------------	-------------	--------------

For current Dealer Installed Accessories pricing, reference BobQuote or Dealer Parts Department.

Breaker Tools – HB1380

7163375	BLUNT	PARTS	\$ _____
7163370	CONICAL POINT (MOIL)	PARTS	\$ _____
7163373	CROSS CUT ASPHALT.....	PARTS	\$ _____
7163367	CROSS CUT CHISEL.....	PARTS	\$ _____
7163371	CROSS CUT WIDE CHISEL	PARTS	\$ _____
7163374	IN-LINE ASPHALT.....	PARTS	\$ _____
7163368	IN-LINE CHISEL.....	PARTS	\$ _____
7163369	NAIL POINT.....	PARTS	\$ _____
7163372	WIDE CHISEL.....	PARTS	\$ _____

BREAKER, HYDRAULIC

BOBCAT EXCAVATOR ATTACHMENT

PART NUMBER	ATTACHMENT DESCRIPTION	SLP IN US \$
(442) (E80, E85)		
7133203	HB2380 BREAKER (Includes Nail Point, fixing cap bolts, cradle, isolation mount, and hose protector) (Must also order Pin-On Mounting Cap and Hose Kit)	\$15,996.00

PART NUMBER	DEALER INSTALLED ACCESSORIES – ORDER FROM SALES DESCRIPTION	SLP IN US \$
-------------	---	--------------

Mounting Frames –HB2380

(442)		
7145372	PIN-ON MOUNTING CAP (Must also order a hose kit, P/N 7130290)	\$619.00
(E80, E85)		
7168502	PIN-ON MOUNTING CAP (Must also order hose kit, P/N 7176608, mounting cap uses 45mm pins)	\$731.00
(E85 R-Series)		
7307177	PIN-ON MOUNTING CAP (Mounting cap uses 55mm pins)	\$720.00

Accessories – HB2380

7141851	AUTO-GREASE KIT	\$1,873.00
7130290	HOSE KIT 442	\$240.00
(Includes hoses and quick couplers)		
7176608	HOSE KIT-E80	\$279.00
(Includes hoses and quick couplers)		

PART NUMBER	DEALER INSTALLED ACCESSORIES – ORDER FROM PARTS DESCRIPTION
-------------	---

For current Dealer Installed Accessories pricing, reference BobQuote or Dealer Parts Department.

Breaker Tools – HB2380

7144728	BLUNT	PARTS	\$ _____
7144723	CONICAL POINT (MOIL)	PARTS	\$ _____
7144726	CROSS CUT ASPHALT	PARTS	\$ _____
7144720	CROSS CUT CHISEL	PARTS	\$ _____
7144724	CROSS CUT WIDE CHISEL	PARTS	\$ _____
7144727	IN-LINE ASPHALT	PARTS	\$ _____
7144721	IN-LINE CHISEL	PARTS	\$ _____
7144722	NAIL POINT	PARTS	\$ _____
7144725	WIDE CHISEL	PARTS	\$ _____

DESTINATION CHARGE/FUEL SURCHARGE
Refer to BobQuote or BobcatNET>>Other Resources>>Pricing Homepage for current Destination and Fuel Charges.

ATTACHMENT	ASSEMBLY REQUIRED	INSTALLATION TIME (HOURS)
------------	-------------------	---------------------------

Prices and Specifications

Subject to Change Without Notice

Check BobcatNET Pricing Homepage for current Canadian exchange rate.

Excavator Attachments

All Prices in U.S. Dollars

North American Suggested List Prices

2017 Price Book

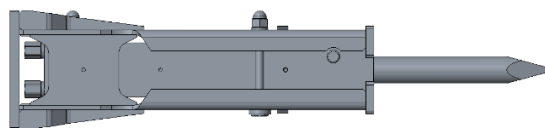
Page 17 of 50

BREAKER, HYDRAULIC
BOBCAT EXCAVATOR ATTACHMENT

Breaker	None.....	-
HB280	Install temperature alarm on 316.....	1.5
HB1380	Install grease kit on HB1380	1.0
HB2380	Install grease kit on HB2380	1.0

BREAKER, NITROGEN

BOBCAT EXCAVATOR ATTACHMENT



QUICK SPECS

	<u>NB110</u>	<u>NB140</u>	<u>NB150</u>
Operating Weight (nail point & X-Change or pin-on cap)...	185 lbs.	646 lbs.	787 lbs.
Impact Energy Class.....	150 ft lbs.	350 ft. lb.	550 ft. lb.
AEM Tool Energy Rating.....	81 ft lbs.	243 ft lb.	303 ft lb.
Blows per Minute.....	1300 @ 7.9 gpm	1022 @ 13.2 gpm	1075 @ 20.4 gpm
Flow Requirements.....	3-8 gpm	7-13 gpm	13-20 gpm
Tool Working Length.....	11.2"	14.6"	13.0"
Tool Diameter.....	1.7"	2.2"	2.6"

*Estimated Breaker Performance
with Concrete*

Recommended Working Thickness.....	1 - 5"	4 - 12"	6 - 15"
Demolished Volume per Hour			
Non-Reinforced Concrete.....	1 - 3 cu. yds	1 - 4 cu. yds.	4 - 15 cu. yds.
Reinforced Concrete.....	1 - 3 cu. yds	1 - 4 cu. yds.	1 - 6 cu. yds.

	<u>NB160</u>	<u>NB170</u>	<u>NB180</u>
Operating Weight (nail point & X-Change or pin-on cap)...	1208 lbs.	1287 lbs.	1194 lbs.
Impact Energy Class.....	900 ft. lbs.	1200 ft. lbs.	1500 ft. lbs.
AEM Tool Energy Rating.....	592 ft. lbs.	759 ft. lbs.	996 ft. lbs.
Blows per Minute.....	979 @ 23.3 gpm	965 @ 21.9 gpm	1000 @ 29 gpm
Flow Requirements.....	13-24 gpm	11-24 gpm	15-30 gpm
Tool Working Length.....	18.4"	21.9"	22.7"
Tool Diameter.....	2.8"	3.2"	3.7"

*Estimated Breaker Performance
with Concrete*

Recommended Working Thickness.....	10 - 20"	12 - 22"	14 - 24"
Demolished Volume per Hour			
Non-Reinforced Concrete.....	6 - 20 cu. yds.	8 - 20 cu. yds.	11 - 25 cu. yds.
Reinforced Concrete.....	3 - 8 cu. yds.	4 - 10 cu. yds.	5 - 16 cu. yds.

BREAKER, NITROGEN

BOBCAT EXCAVATOR ATTACHMENT

PART NUMBER	ATTACHMENT DESCRIPTION	SLP IN US \$
(E10, 418)		
7355660	NB110 BREAKER (Includes Nail Point) (Must also order hose kit and mounting cap) (If used on 316 excavator, must also order temperature warning kit p/n 7140103 and coupler kit p/n 7170567)	\$3,682.00

PART NUMBER	DEALER INSTALLED ACCESSORIES – ORDER FROM SALES DESCRIPTION	SLP IN US \$
-------------	---	--------------

<i>Accessories – NB110</i>		
7170566	HOSE KIT FOR 316 & 418	\$183.00
7160677	PIN-ON MOUNTING CAP - 418	\$91.00

PART NUMBER	DEALER INSTALLED ACCESSORIES – ORDER FROM PARTS DESCRIPTION	
-------------	---	--

For current Dealer Installed Accessories pricing, reference BobQuote or Dealer Parts Department.

7133409	PIN-ON MOUNTING CAP - 316	PARTS	\$ _____
(If machine bucket pins have a round head, order square head pins p/n NTS 3-51110, qty 2)			
7170567	COUPLER KIT FOR 316	PARTS	\$ _____
7140103	TEMPERATURE WARNING KIT	PARTS	\$ _____
(Required when operating breaker with 316 excavator)			
<i>Breaker Tools – NB110</i>			
7357284	CROSS CUT CHISEL	PARTS	\$ _____
7357283	IN-LINE CHISEL	PARTS	\$ _____
7357282	NAIL POINT	PARTS	\$ _____

BREAKER, NITROGEN

BOBCAT EXCAVATOR ATTACHMENT

PART NUMBER	DESCRIPTION	ATTACHMENT	SLP IN US \$
(E20, E26)			
7355666	NB140 BREAKER		\$3,597.00
	(Includes Nail Point, fixing cap bolts) (Must also order Mounting Cap and Hose Kit)		

PART NUMBER	DESCRIPTION	DEALER INSTALLED ACCESSORIES – ORDER FROM SALES	SLP IN US \$
<u>Mounting Frames – NB140</u>			
7117752	PIN-ON MOUNTING CAP – E20		\$284.00
	(Must also order a hose kit, P/N 7117823)		
7113656	X-CHANGE MOUNTING CAP – E26		\$467.00
	(Must also order appropriate hose kit, P/N 7117823 or 7117832)		
<u>Accessories – NB140</u>			
7117823	HOSE KIT – E20, E26		\$198.00
	(Includes hoses and quick couplers)		
7114762	HOSE KIT – E26 Long Arm		\$198.00
	(Includes hoses and quick couplers)		

PART NUMBER	DESCRIPTION	DEALER INSTALLED ACCESSORIES – ORDER FROM PARTS	
<u>For current Dealer Installed Accessories pricing, reference BobQuote or Dealer Parts Department.</u>			
<u>Breaker Tools – NB140</u>			
7357286	CONICAL POINT (MOIL)	PARTS	\$ _____
7357288	CROSS CUT CHISEL	PARTS	\$ _____
7357287	IN-LINE CHISEL	PARTS	\$ _____
7357285	NAIL POINT	PARTS	\$ _____

BREAKER, NITROGEN

BOBCAT EXCAVATOR ATTACHMENT

PART NUMBER	DESCRIPTION	ATTACHMENT	SLP IN US \$
-------------	-------------	------------	--------------

(E32, E35)

7234534	NB150 BREAKER (Includes Nail Point, fixing cap bolts) (Must also order X-Change Mounting Cap and Hose Kit)	\$4,777.00
---------	---	------------

NOTE: Extendable Arm must be pinned in the retracted position to use hydraulic attachments.

PART NUMBER	DESCRIPTION	DEALER INSTALLED ACCESSORIES – ORDER FROM SALES	SLP IN US \$
-------------	-------------	---	--------------

<u>Mounting Frame – NB150</u>			
7113657	X-CHANGE MOUNTING CAP (Must also order a hose kit)		\$482.00

<u>Accessories – NB150</u>			
6728963	HOSE KIT – E32, E35 (Includes hoses and quick couplers)		\$198.00
7180019	HOSE KIT – E32 Long Arm, E35 Long Arm (Includes hoses and quick couplers)		\$239.00

PART NUMBER	DESCRIPTION	DEALER INSTALLED ACCESSORIES – ORDER FROM PARTS
-------------	-------------	---

For current Dealer Installed Accessories pricing, reference BobQuote or Dealer Parts Department.

<u>Breaker Tools – NB150</u>			
7357294	BLUNT	PARTS	\$ _____
7357291	CONICAL POINT (MOIL)	PARTS	\$ _____
7357923	CROSS CUT CHISEL	PARTS	\$ _____
7357292	IN-LINE CHISEL	PARTS	\$ _____
7357290	NAIL POINT	PARTS	\$ _____

BREAKER, NITROGEN

BOBCAT EXCAVATOR ATTACHMENT

PART NUMBER	DESCRIPTION	ATTACHMENT	SLP IN US \$
(E32, E35, E42, E45, E50, E55)			
7234536	NB160 BREAKER		\$5,984.00
	(Includes Nail Point, fixing cap bolts) (Must also order X-Change Mounting Cap and Hose Kit)		

NOTE: Extendable Arm must be pinned in the retracted position to use hydraulic attachments.

PART NUMBER	DESCRIPTION	DEALER INSTALLED ACCESSORIES – ORDER FROM SALES	SLP IN US \$
<u>Mounting Frame –NB160</u>			
7113657	X-CHANGE MOUNTING CAP		\$482.00
	(Must also order a hose kit)		
<u>Accessories –NB160</u>			
6728967	HOSE KIT –E50 – WITH LONG ARM; E55 – ALL		\$198.00
	(Includes hoses and quick couplers)		
6728963	HOSE KIT – E32, E35		\$198.00
	(Includes hoses and quick couplers)		
7180019	HOSE KIT – E32, E35, E42, E45 – ALL WITH LONG ARM		\$239.00
	(Includes hoses and quick couplers)		
7114762	HOSE KIT – E42, E45, E50		\$198.00
	(Includes hoses and quick couplers)		

PART NUMBER	DESCRIPTION	DEALER INSTALLED ACCESSORIES – ORDER FROM PARTS
-------------	-------------	---

For current Dealer Installed Accessories pricing, reference BobQuote or Dealer Parts Department.

<u>Breaker Tools –NB160</u>			
7357299	BLUNT	PARTS	\$ _____
7357298	CONICAL POINT (MOIL)	PARTS	\$ _____
7357295	CROSS CUT CHISEL	PARTS	\$ _____
7357302	IN-LINE CHISEL	PARTS	\$ _____
7357297	NAIL POINT	PARTS	\$ _____

BREAKER, NITROGEN BOBCAT EXCAVATOR ATTACHMENT

PART NUMBER	ATTACHMENT DESCRIPTION	SLP IN US \$
-------------	------------------------	--------------

(E63, E80, E85)

7355672	NB170 BREAKER \$13,017.00 (Includes Nail Point, fixing cap bolts) (Must also order Loader Mounting Frame and Hose Kit) (Special Applications Kit must be used when operating a Hydraulic Breaker)	
---------	---	--

PART NUMBER	DEALER INSTALLED ACCESSORIES – ORDER FROM SALES DESCRIPTION	SLP IN US \$
-------------	---	--------------

Mounting Frame – NB170

(E63) 7117325	X-CHANGE MOUNTING CAP \$563.00 (Must also order hose kit, P/N 7176608)	
(E85) 7168502	PIN-ON MOUNTING CAP \$731.00 (Must also order hose kit, P/N 7176608, mounting cap uses 45mm pins)	
(E85 R-Series) 7307177	PIN-ON MOUNTING CAP \$720.00 (Mounting cap uses 55mm pins)	

Accessories – NB170

7176608	HOSE KIT-E60, E63, E80, E85 \$279.00 (Includes hoses and quick couplers)	
---------	--	--

PART NUMBER	DEALER INSTALLED ACCESSORIES – ORDER FROM PARTS DESCRIPTION
-------------	---

For current Dealer Installed Accessories pricing, reference BobQuote or Dealer Parts Department.

Breaker Tools – NB170

7357306	CONICAL POINT (MOIL)	PARTS	\$ _____
7357303	CROSS CUT CHISEL	PARTS	\$ _____
7357302	IN-LINE CHISEL	PARTS	\$ _____
7357300	NAIL POINT	PARTS	\$ _____

BREAKER, NITROGEN BOBCAT EXCAVATOR ATTACHMENT

PART NUMBER	DESCRIPTION	ATTACHMENT	SLP IN US \$
(E80, E85)			
7355674	NB180 BREAKER		\$10,397.00
	<small>(Includes Nail Point, fixing cap bolts, cradle, isolation mount, and hose protector) (Must also order Pin-On Mounting Cap and Hose Kit)</small>		

PART NUMBER	DESCRIPTION	SLP IN US \$
-------------	-------------	--------------

Mounting Frames – NB180

(E85)		
7168502	PIN-ON MOUNTING CAP	\$731.00
	<small>(Must also order hose kit, P/N 7176608, mounting cap uses 45mm pins)</small>	
(E85 R-Series)		
7307177	PIN-ON MOUNTING CAP	\$720.00
	<small>(Mounting cap uses 55mm pins)</small>	
<u>Accessories – NB180</u>		
7176608	HOSE KIT- E80, E85	\$279.00
	<small>(Includes hoses and quick couplers)</small>	

PART NUMBER	DESCRIPTION
-------------	-------------

For current Dealer Installed Accessories pricing, reference BobQuote or Dealer Parts Department.

Breaker Tools – NB180

7357306	CONICAL POINT (MOIL)	PARTS	\$ _____
7357308	CROSS CUT CHISEL	PARTS	\$ _____
7357307	IN-LINE CHISEL	PARTS	\$ _____
7357305	NAIL POINT	PARTS	\$ _____

DESTINATION CHARGE/FUEL SURCHARGE
Refer to BobQuote or BobcatNET>>Other Resources>>Pricing Homepage for current Destination and Fuel Charges.

ATTACHMENT	ASSEMBLY REQUIRED	INSTALLATION TIME (HOURS)
Breaker	None	-
NB110	Install temperature alarm on 316	1.5

BUCKET

BOBCAT EXCAVATOR ATTACHMENT

PART NUMBER	ATTACHMENT DESCRIPTION	ISO HEAPED CAPACITY (FT ³)	SHIP. WGT.	SLP IN US \$
-------------	------------------------	--	------------	--------------

BUCKETS & GRADING BLADE – CURRENT

Class 0 Buckets

(418 Pin-On Style) (E10)

7157626	8" TRENCHING BUCKET WITH TEETH.....	0.31	29	\$386.00
7140493	12" TRENCHING BUCKET WITH TEETH.....	0.54	37	\$421.00
7140489	16" TRENCHING BUCKET WITH TEETH.....	0.79	43	\$436.00
7150275	31" GRADING BUCKET, SMOOTH LIP	1.5	58	\$523.00

Class I Buckets

(320, 322, 323, 324 Pin-On Style) (E20)

6715495	9" TRENCHING BUCKET, 2 BOLT-ON TEETH.....	0.5	53	\$426.00
6715496	12" TRENCHING BUCKET, 3 BOLT-ON TEETH.....	0.7	63	\$472.00
6715497	16" TRENCHING BUCKET, 3 BOLT-ON TEETH.....	1.1	75	\$518.00
7109522	18" TRENCHING BUCKET, 4 BOLT-ON TEETH.....	1.3	90	\$533.00
6715498	20" TRENCHING BUCKET, 4 BOLT-ON TEETH.....	1.4	85	\$563.00
6715499	39" GRADING BUCKET, SMOOTH LIP	3.1	146	\$594.00

Class II Buckets

(325, 328, 425 X-Change™ Style) (E26)

*Class II includes weld-on shank with replaceable teeth

*Class II Smooth Lip includes Bolt On Cutting Edge

7333229	12" TRENCHING BUCKET, SMOOTH LIP	1.33	167	\$660.00
	(Not compatible with hydraulic clamp)			
7333230	12" TRENCHING BUCKET, 3 WELD-ON SHANKS	1.33	173	\$660.00
	(Not compatible with hydraulic clamp)			
7333244	16" TRENCHING BUCKET, SMOOTH LIP	1.92	192	\$690.00
7333245	16" TRENCHING BUCKET, 4 WELD-ON SHANKS	1.92	195	\$690.00
7333254	20" TRENCHING BUCKET, SMOOTH LIP	2.53	226	\$735.00
7333255	20" TRENCHING BUCKET, 4 WELD-ON SHANKS	2.53	230	\$735.00
7333259	24" TRENCHING BUCKET, SMOOTH LIP	3.14	254	\$802.00
7333260	24" TRENCHING BUCKET, 4 WELD-ON SHANKS	3.14	255	\$802.00
7333978	36" GRADING BUCKET, BOLT ON CUTTING EDGE	5.19	279	\$1,025.00
7333979	48" GRADING BUCKET, BOLT ON CUTTING EDGE	7.12	328	\$1,240.00

NOTE: THESE BUCKETS ARE THE SAME BUCKETS AS USED WITH THE 607 BACKHOES.

6817096	55" GRADING BLADE	N/A	320	\$786.00
---------	-------------------------	-----	-----	----------

BUCKET

BOBCAT EXCAVATOR ATTACHMENT

PART NUMBER	ATTACHMENT DESCRIPTION	ISO HEAPED CAPACITY (FT ³)	SHIP. WGT.	SLP IN US \$
-------------	------------------------	--	------------	--------------

BUCKETS & GRADING BLADE – CURRENT

CLASS III Buckets

(329, 331, 331E, 334, 430 X-Change™ Style) (E32, E35)

*Class III includes weld-on shank with replaceable teeth

*Class III Smooth Lip includes Bolt On Cutting Edge

7323832	12" TRENCHING BUCKET, SMOOTH LIP	1.6	178	\$883.00
7323833	12" TRENCHING BUCKET, 3 WELD-ON SHANKS.....	1.6	184	\$883.00
7324829	16" TRENCHING BUCKET, SMOOTH LIP	2.31	206	\$908.00
7324830	16" TRENCHING BUCKET, 4 WELD-ON SHANKS.....	2.31	208	\$908.00
7323841	18" TRENCHING BUCKET, SMOOTH LIP	2.68	226	\$995.00
7323842	18" TRENCHING BUCKET, 4 WELD-ON SHANKS.....	2.68	231	\$995.00
7323820	20" TRENCHING BUCKET, SMOOTH LIP	3.05	241	\$1,036.00
7323821	20" TRENCHING BUCKET, 4 WELD-ON SHANKS.....	3.05	244	\$1,036.00
7323529	24" TRENCHING BUCKET, SMOOTH LIP	3.8	238	\$1,071.00
7323530	24" TRENCHING BUCKET, 4 WELD-ON SHANKS.....	3.8	274	\$1,071.00
7323822	30" TRENCHING BUCKET, SMOOTH LIP	4.91	319	\$1,193.00
7323823	30" TRENCHING BUCKET, 5 WELD-ON SHANKS.....	4.91	325	\$1,193.00
7323824	36" TRENCHING BUCKET, SMOOTH LIP	6.02	365	\$1,299.00
7323825	36" TRENCHING BUCKET, 6 WELD-ON SHANKS.....	6.02	365	\$1,299.00
7333978	36" GRADING BUCKET, BOLT ON CUTTING EDGE	5.19	279	\$1,025.00
7333979	48" GRADING BUCKET, BOLT ON CUTTING EDGE.....	7.12	328	\$1,240.00

NOTE: THESE BUCKETS ARE THE SAME BUCKETS AS USED WITH THE 709, 8709, 811 & 8811 BACKHOES.

6817096	55" GRADING BLADE.....	N/A	320	\$786.00
---------	------------------------	-----	-----	----------

CLASS III BUCKETS

(E42 "STANDARD" BUCKETS)

*Class III includes weld-on shank with replaceable teeth

*Class III Smooth Lip includes Bolt On Cutting Edge

7323832	12" TRENCHING BUCKET, SMOOTH LIP	1.6	178	\$883.00
7323833	12" TRENCHING BUCKET, 3 WELD-ON SHANKS.....	1.6	184	\$883.00
7324829	16" TRENCHING BUCKET, SMOOTH LIP	2.31	206	\$908.00
7324830	16" TRENCHING BUCKET, 4 WELD-ON SHANKS.....	2.31	208	\$908.00
7323841	18" TRENCHING BUCKET, SMOOTH LIP	2.68	226	\$995.00
7323842	18" TRENCHING BUCKET, 4 WELD-ON SHANKS.....	2.68	231	\$995.00
7323529	24" TRENCHING BUCKET, SMOOTH LIP	3.8	238	\$1,071.00
7323530	24" TRENCHING BUCKET, 4 WELD-ON SHANKS.....	3.8	274	\$1,071.00

BUCKET

BOBCAT EXCAVATOR ATTACHMENT

PART NUMBER	DESCRIPTION	ATTACHMENT	ISO HEAPED CAPACITY (FT ³)	SHIP. WGT.	SLP IN US \$
-------------	-------------	------------	--	------------	--------------

CLASS IV BUCKETS

(335, 337, 341 & 435 X-CHANGE™ STYLE) (E42, E45, E50, E55, E60, E63)

*Class IV includes weld-on shank with replaceable teeth

*Class IV Smooth Lip includes Bolt On Cutting Edge

7321975	12" TRENCHING BUCKET, SMOOTH LIP	2.19	225	\$944.00
7321974	12" TRENCHING BUCKET, 3 WELD-ON SHANKS.....	2.19	225	\$944.00
7322080	18" TRENCHING BUCKET, SMOOTH LIP	3.69	285	\$1,096.00
7322082	18" TRENCHING BUCKET, 4 WELD-ON SHANKS.....	3.69	285	\$1,096.00
7311869	24" TRENCHING BUCKET, SMOOTH LIP	5.27	346	\$1,264.00
7311868	24" TRENCHING BUCKET, 4 WELD-ON SHANKS.....	5.27	341	\$1,264.00
7322087	30" TRENCHING BUCKET, SMOOTH LIP	6.86	404	\$1,426.00
7322088	30" TRENCHING BUCKET, 5 WELD-ON SHANKS.....	6.86	405	\$1,426.00
7322090	36" TRENCHING BUCKET, SMOOTH LIP	8.46	461	\$1,538.00
7322091	36" TRENCHING BUCKET, 6 WELD-ON SHANKS.....	8.46	458	\$1,538.00
7333657	36" GRADING BUCKET, BOLT ON CUTTING EDGE	6.33	355	\$1,229.00
7333658	48" GRADING BUCKET, BOLT ON CUTTING EDGE	8.69	444	\$1,510.00
7333659	60" GRADING BUCKET, BOLT ON CUTTING EDGE	11.05	355	\$1,785.00

(APPROVED FOR 335, 337, 341, & 435 X-CHANGE STYLE. NOT APPROVED FOR E42-E63)

6817096	55" GRADING BLADE.....	N/A	320	\$786.00
---------	------------------------	-----	-----	----------

CLASS V BUCKETS

(E55, E63)

*Class V includes weld-on shank with replaceable teeth

*Smooth Lip includes Bolt On Cutting Edge

7333363	18" TRENCHING BUCKET, SMOOTH LIP	4.36	335	\$1,134.00
7333364	18" TRENCHING BUCKET, 4 WELD-ON SHANKS.....	4.36	332	\$1,134.00
7333373	24" TRENCHING BUCKET, SMOOTH LIP	6.24	402	\$1,306.00
7333374	24" TRENCHING BUCKET, 4 WELD-ON SHANKS.....	6.24	383	\$1,306.00
7333378	30" TRENCHING BUCKET, SMOOTH LIP	8.16	465	\$1,473.00
7333379	30" TRENCHING BUCKET, 5 WELD-ON SHANKS.....	8.16	460	\$1,473.00
7333383	36" TRENCHING BUCKET, SMOOTH LIP	10.09	529	\$1,588.00
7333384	36" TRENCHING BUCKET, 6 WELD-ON SHANKS.....	10.09	516	\$1,588.00
7333658	48" GRADING BUCKET, BOLT ON CUTTING EDGE	8.69	444	\$1,510.00
7333659	60" GRADING BUCKET, BOLT ON CUTTING EDGE	11.05	355	\$1,785.00

BUCKET

BOBCAT EXCAVATOR ATTACHMENT

PART NUMBER	ATTACHMENT DESCRIPTION	ISO HEAPED CAPACITY (FT ³)	SHIP. WGT.	SLP IN US \$
-------------	------------------------	--	------------	--------------

CLASS VI BUCKETS

E80, E85 M-SERIES PIN-ON BUCKETS*

(E80, E85) *Not compatible R-Series E85

7171895	18" TRENCHING BUCKET, WITH 3 WELD-ON SHANKS.....	6.6	342	\$1,137.00
7171893	24" TRENCHING BUCKET, WITH 4 WELD-ON SHANKS.....	9.5	414	\$1,372.00
7171897	36" TRENCHING BUCKET, WITH 5 WELD-ON SHANKS.....	15	617	\$1,629.00
7171899	54" GRADING BUCKET, SMOOTH LIP	14.1	620	\$2,045.00
7171901	48" TILTING GRADE BUCKET, SMOOTH LIP			\$7,283.00

E85 R-SERIES PIN-ON BUCKETS*

(E85R) *Not compatible with M-Series E80, E85

*Class VI includes weld-on shank with replaceable teeth

7322125	18" TRENCHING BUCKET, WITH 3 WELD-ON SHANKS.....	5.69	486	\$1,200.00
7322123	24" TRENCHING BUCKET, WITH 4 WELD-ON SHANKS.....	8.14	561	\$1,372.00
7322126	36" TRENCHING BUCKET, WITH 5 WELD-ON SHANKS.....	13.27	704	\$1,629.00
7334506	60" GRADING BUCKET, BOLT ON CUTTING EDGE	15.51	668	\$2,045.00
7325612	48" TILTING GRADE BUCKET, SMOOTH LIP	9.99	886	\$7,283.00

442 PIN-ON BUCKETS

(442)

7125310	18" TRENCHING BUCKET, WITH 3 WELD-ON SHANKS.....	5.2	342	\$1,066.00
7125308	24" TRENCHING BUCKET, WITH 4 WELD-ON SHANKS.....	7.3	414	\$1,284.00
7125312	36" TRENCHING BUCKET, WITH 5 WELD-ON SHANKS.....	9.9	617	\$1,538.00
7125306	54" GRADING BUCKET, SMOOTH LIP	9.5	406	\$2,938.00

BUCKETS –NON CURRENT

(225, 325 & 328 Pin-On Style)

6534123	24" TRENCHING BUCKET, WITH 5 BOLT-ON TEETH.....	2.9	152	\$685.00
---------	---	-----	-----	----------

PART NUMBER	DEALER INSTALLED ACCESSORIES – ORDER FROM PARTS DESCRIPTION
-------------	---

For current Dealer Installed Accessories pricing, reference BobQuote or Dealer Parts Department.

ACCESSORIES FOR ALL CURRENT 325-43, E32, E35 EXCAVATOR BUCKETS

7107317	HENSLEY FORGED TOOTH POINT (QTY. 1)	PARTS	\$ _____
7107320	HENSLEY TIGER TOOTH POINT (QTY. 1)	PARTS	\$ _____
7107321	HENSLEY TWIN TIGER TOOTH POINT (QTY. 1)	PARTS	\$ _____

DESTINATION CHARGE/FUEL SURCHARGE

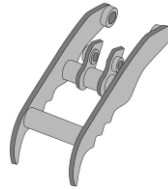
Refer to BobQuote or BobcatNET>>Other Resources>>Pricing Homepage for current Destination and Fuel Charges.

ATTACHMENT	ASSEMBLY REQUIRED INSTALLATION TIME (HRS.)
------------	--

Bucket (all)None..... -

CLAMP

BOBCAT EXCAVATOR ATTACHMENT



QUICK SPECS

Hydraulic Clamp

	<u>E20</u>	<u>E26-E35</u>	<u>E42</u>	<u>E42-E63</u>	<u>E85</u>
Operating Weight.....	50 lbs.	126 lbs.	171 lbs.	218 lbs.	449 lbs.
Clamp Width.....	5.5"	13.0"	14.4"	15.0"	16.5"
Tooth Radius.....	19.8"	27.2"	27.2"	32.0"	41.0"
Tooth Thickness.....	½"	¾"	¾"	1"	1"
Class.....	I	III	III	IV	V
	<u>322-324</u>	<u>325-430</u>	<u>335-435</u>	<u>442</u>	
Operating Weight.....	70 lbs.	176 lbs.	299 lbs.	265 lbs.	
Clamp Width.....	5.5"	13.0"	14.4"	16.0"	
Tooth Radius.....	21.5"	27.2"	30.7"	31.3"	
Tooth Thickness.....	½"	¾"	1"	1"	
Class.....	I	III	IV	V	

Pro Clamp™ System

	<u>E32i-E35</u>	<u>E42-E55</u>
Operating Weight.....	121 lbs.	215 lbs.
Clamp Width.....	12"	14"
Class.....	III	IV

CLAMP

BOBCAT EXCAVATOR ATTACHMENT

PART NUMBER	ATTACHMENT DESCRIPTION	SLP IN US \$
-------------	------------------------	--------------

Hydraulic Clamp is NOT recommended in combination with Hydraulic Breakers

(E20)

7258209 HYDRAULIC CLAMP..... \$1,015.00
 (Includes Clamp, cylinder, hoses, hose bracket, & pins)
 (Hydraulic Clamp is NOT recommended in combination with Hydraulic Breakers)

(322, 323, 324)

7110207 HYDRAULIC CLAMP \$1,062.00
 (Includes cylinder, port relief, cylinder bracket, hoses & pins) (Use with a Trenching Bucket)
 (Hydraulic Clamp is NOT recommended in combination with Hydraulic Breakers)

(325*, 328, 329, 331*, 334, 425, 430) CLASS II/III

7104321 HYDRAULIC CLAMP \$1,857.00
 (Includes cylinder, hoses & pins, and port relief)
 (For excavators with long arm option must also order hose extension P/N 6714741 (Qty. 2) from Parts)
 (329 excavator must also order Auxiliary Hydraulics p/n 7126596)
(The Hydraulic Clamp is NOT approved for use with the extendable arm option)
 (Hydraulic Clamp is NOT recommended in combination with Hydraulic Breakers)
 (For non-current excavators refer to Bobcat Parts for correct Port Relief, Port Relief Block and Clamp Cylinder Bracket.)

(E26) Class III

7206504 HYDRAULIC CLAMP, STANDARD ARM..... \$1,857.00
 (Includes cylinder, hoses & pins)

7206505 HYDRAULIC CLAMP, LONG ARM \$1,857.00
 (Includes cylinder, hoses & pins)

PART NUMBER	ATTACHMENT DESCRIPTION	SLP IN US \$
-------------	------------------------	--------------

Hydraulic Clamp is NOT recommended in combination with Hydraulic Breakers

(E32, E35) CLASS III

7171388 HYDRAULIC CLAMP, STANDARD ARM..... \$1,998.00
 (Includes cylinder, hoses & pins)

7171389 HYDRAULIC CLAMP, LONG ARM \$1,998.00
 (Includes cylinder, hoses & pins)

7203200 HYDRAULIC CLAMP, EXTENDABLE ARM \$1,998.00
 (The Hydraulic Clamp is approved for use with the extendable arm extended)
 (Includes cylinder, hoses & pins)

(E42) CLASS III

7182692 HYDRAULIC CLAMP, STANDARD ARM..... \$2,102.00
 (For use with Class III Buckets) (Includes cylinder, hoses & pins)

7182693 HYDRAULIC CLAMP, LONG ARM \$2,102.00
 (For use with Class III Buckets) (Includes cylinder, hoses & pins)

(337, 341) CLASS IV

7131930 HYDRAULIC CLAMP \$2,878.00
 (Includes cylinder, hoses & pins, but for 337 with long arm must also order hose extension P/N 6808278 (Qty. 2) from Parts) (Use with a Trenching Bucket or 3-Tine Grapple)
 (Hydraulic Clamp is NOT recommended in combination with Hydraulic Breakers)

(335, 435) CLASS IV

7131931 HYDRAULIC CLAMP \$2,425.00
 (Includes cylinder, hoses & pins) (Use with a Trenching Bucket or 3-Tine Grapple)
 (If using with 435 equipped with Long Arm must also order hose extensions p/n 6808278, qty 2)
 (Hydraulic Clamp is NOT recommended in combination with Hydraulic Breakers)

CLAMP**BOBCAT EXCAVATOR ATTACHMENT**

PART NUMBER	DESCRIPTION	ATTACHMENT	SLP IN US \$
(E42, E45) CLASS IV			
7186614	HYDRAULIC CLAMP, STANDARD ARM.....		\$2,425.00
	(For use with Class IV Buckets) (Includes cylinder, hoses & pins)		
7186615	HYDRAULIC CLAMP, LONG ARM		\$2,425.00
	(For use with Class IV Buckets) (Includes cylinder, hoses & pins)		
7269969	HYDRAULIC CLAMP, EXTENDABLE ARM		\$2,426.00
	(For use with Class IV Buckets) (Includes cylinder, hoses & pins)		
(E50) CLASS IV			
7182661	HYDRAULIC CLAMP, STANDARD ARM.....		\$2,528.00
	(Includes cylinder, hoses & pins)		
7182663	HYDRAULIC CLAMP, LONG ARM		\$2,528.00
	(Includes cylinder, hoses & pins)		
(E55) CLASS IV			
7182663	HYDRAULIC CLAMP		\$2,528.00
	(For use with Class IV Buckets) (Includes cylinder, hoses & pins)		
7269968	HYDRAULIC CLAMP, EXTENDABLE ARM		\$2,529.00
	(For use with Class IV Buckets) (Includes cylinder, hoses & pins)		
(E60, E63)			
7187919	HYDRAULIC CLAMP		\$2,820.00
	(Includes cylinder, hoses & pins)		
(E80, E85)			
7171909	HYDRAULIC CLAMP		\$4,053.00
	(Includes cylinder, hoses & 45mm pins)		
(E85 R-Series)			
7333391	HYDRAULIC CLAMP		\$3,993.00
	(Includes cylinder, hoses & 55mm pins)		

CLAMP

BOBCAT EXCAVATOR ATTACHMENT

PART NUMBER	DESCRIPTION	ATTACHMENT	SLP IN US \$
-------------	-------------	------------	--------------

Hydraulic Clamp is NOT recommended in combination with Hydraulic Breakers

Pro Clamp™ System

(E32i, E32, E35i, E35) CLASS III

7221006	PRO CLAMP™ SYSTEM KIT FOR STANDARD ARM (Includes cylinder, hoses, pins, Pro Clamp and Material Clamp) (Not compatible with Extendable Arm)	\$2,518.00
7221011	PRO CLAMP™ SYSTEM KIT FOR LONG ARM (Includes cylinder, hoses, pins, Pro Clamp and Material Clamp) (Not compatible with Extendable Arm)	\$2,518.00

(E42, E45) CLASS IV (Not compatible with Hydra-Tilt)

7240479	PRO CLAMP™ SYSTEM KIT FOR STANDARD ARM (Includes cylinder, hoses, pins, Pro Clamp and Material Clamp) (Not compatible with Extendable Arm)	\$3,018.00
7240481	PRO CLAMP™ SYSTEM KIT FOR LONG ARM (Includes cylinder, hoses, pins, Pro Clamp and Material Clamp) (Not compatible with Extendable Arm)	\$3,018.00

(E50) CLASS IV (Not compatible with Hydra-Tilt)

7240475	PRO CLAMP™ SYSTEM KIT FOR STANDARD ARM (Includes cylinder, hoses, pins, Pro Clamp and Material Clamp) (Not compatible with Extendable Arm)	\$3,018.00
7240477	PRO CLAMP™ SYSTEM KIT FOR LONG ARM (Includes cylinder, hoses, pins, Pro Clamp and Material Clamp) (Not compatible with Extendable Arm)	\$3,018.00

(E55) CLASS IV (Not compatible with Hydra-Tilt)

7240477	PRO CLAMP™ SYSTEM KIT FOR STANDARD ARM (Includes cylinder, hoses, pins, Pro Clamp and Material Clamp) (Not compatible with Extendable Arm)	\$3,018.00
---------	---	-------------------

PART NUMBER	DESCRIPTION
-------------	-------------

For current Dealer Installed Accessories pricing, reference BobQuote or Dealer Parts Department.

ACCESSORIES FOR PRO CLAMP™ SYSTEM

7227745	MATERIAL CLAMP (CLASS III)	PARTS	\$ _____
7230840	MATERIAL CLAMP (CLASS IV)	PARTS	\$ _____
7227740	GRADING CLAMP (CLASS III)	PARTS	\$ _____
7230850	GRADING CLAMP (CLASS IV).....	PARTS	\$ _____

CLAMP

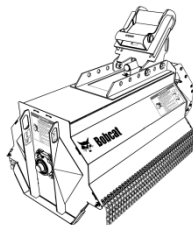
BOBCAT EXCAVATOR ATTACHMENT

DESTINATION CHARGE/FUEL SURCHARGE
 Refer to BobQuote or BobcatNET>>Other Resources>>Pricing Homepage for current Destination and Fuel Charges.

ATTACHMENT	ASSEMBLY REQUIRED	INSTALLATION TIME (HRS.)
E26-E55 Hydraulic Clamp.....	Install clamp.....	2.0
E32i-E55 Pro Clamp System.....	Install clamp.....	2.0
322-323 Hydraulic Clamp.....	Weld cylinder bracket, install clamp and port relief.....	2.0
325-334 Hydraulic Clamp.....	Install clamp and port relief.....	2.5
335-435, E32, E35 Hydraulic Clamp.....	Install clamp.....	1.5
442 Hydraulic Clamp	Install clamp.....	1.0
442	Weld cylinder bracket onto dipper s/n 522311490 & below.....	1.0

FLAIL MOWER

BOBCAT EXCAVATOR ATTACHMENT



QUICK SPECS

	<u>30FM</u>	<u>40FM</u>	<u>40FMR</u>
Weight (with X-Change Mount)	649 lbs.	736 lbs.	881 lbs.
Weight (with Pin-on Mount)	N/A	708 lbs.	876 lbs.
Working Width	30"	40"	40"
Overall Width	50.4"	60.4"	60.4"
Cutting Capacity	Up to 4"* *Only up to 1.5" on E32i, E35i	Up to 4"	Up to 4"
Hydraulic Flow	12.2-19.5 GPM	14-22.4 GPM	18.4-31.7 GPM
Number of Knives	27	36	36
Mount Options	X-Change	X-Change, Pin-on	X-Change, Pin-on

PART NUMBER	FLAIL MOWER DESCRIPTION	SLP IN US \$
-------------	-------------------------	--------------

(E32, E35) (E32i*, E35i*)		
7225484	30" FLAIL MOWER - 30FM..... (Approved only for excavator models equipped with an enclosed cab) (Approved on Long and Extendable Arm – must have extendable arm retracted during flail mower use.) (Must also order case drain kit, hose kit and mounting cap)	\$7,276.00
(E42, E45, E50, E55)		
7225485	40" FLAIL MOWER - 40FM..... (Approved only for excavator models equipped with an enclosed cab) (Approved on Long and Extendable Arm – must have extendable arm retracted during flail mower use.) (Must also order case drain kit, hose kit and mounting cap)	\$8,177.00
(E63, E80, E85)		
7225486	40" REINFORCED FLAIL MOWER - 40FMR (Approved only for excavator models equipped with an enclosed cab) (Must also order case drain kit, hose kit and mounting cap)	\$9,080.00

PART NUMBER	FACTORY INSTALLED ACCESSORIES DESCRIPTION	SLP IN US \$
-------------	---	--------------

<u>Accessories – 30" Flail Mower – 30FM</u>		
7245468	HOSES FOR E32, E32I, E35, E35I..... (Includes hoses and quick couplers) (Must order 7245617 and 7238337)	\$214.00
7238337	X-CHANGE MOUNTING CAP - E32, E32I, E35, E35I (Mounting cap will arrive assembled on Flail Mower) (Must also order a hose kit and case drain kit)	\$822.00
<u>Accessories – 40" Flail Mower – 40FM</u>		
7245468	HOSES FOR STD ARM E42, E45, E50 AND EXT ARM E42, E45 (Includes hoses and quick couplers) (Must order a mounting cap and case drain kit)	\$214.00
7245459	HOSES FOR LONG ARMS E42, E45, E50, E55 AND E55 EXT ARM..... (Includes hoses and quick couplers) (Must order a mounting cap and case drain kit)	\$240.00
7238337	X-CHANGE MOUNTING CAP– E42, E45, E50, E55	\$822.00

FLAIL MOWER

BOBCAT EXCAVATOR ATTACHMENT

	(Mounting cap will arrive assembled on Flail Mower) (Must also order a hose kit and case drain kit)	
7246964	PIN-ON MOUNTING CAP – E42, E45, E50, E55	\$822.00
	(Mounting cap will arrive assembled on Flail Mower) (Must also order a hose kit and case drain kit)	
	<u>Accessories – 40" Reinforced Flail Mower – 40FMR</u>	
7260182	HOSES FOR 40FMR ON E63, E80 AND E85	\$241.00
	(Includes hoses and quick couplers) (Must order mounting cap and case drain kit)	
7238337	X-CHANGE MOUNTING CAP – E63.....	\$822.00
	(Mounting cap will arrive assembled on Flail Mower) (Must also order a hose kit and case drain kit)	
7238338	PIN-ON MOUNTING CAP – E80, E85	\$1,035.00
	(Mounting cap will arrive assembled on Flail Mower) (Must also order a hose kit and case drain kit, mounting cap uses 45 mm pins)	
7307134	PIN-ON MOUNTING CAP – E85 R-SERIES.....	\$1,020.00
	(Mounting cap will arrive assembled on Flail Mower) (Must also order a hose kit and case drain kit, mounting cap uses 55mm pins)	

PART NUMBER	DEALER INSTALLED ACCESSORIES – ORDER FROM PARTS DESCRIPTION	SLP IN US \$
-------------	---	--------------

	<u>Accessories – 30FM</u>	
7245617	CASE DRAIN KIT FOR E32, E35 (90 minute assembly time)	\$ _____
	<u>Accessories – 40FM</u>	
7246494	CASE DRAIN KIT FOR E42..... (90 minute assembly time)	\$ _____
7245618	CASE DRAIN KIT FOR E45, E50, E55..... (90 minute assembly time)	\$ _____
	<u>Accessories – 40FMR</u>	
7252156	CASE DRAIN KIT FOR E63..... (90 minute assembly time)	\$ _____
7252158	CASE DRAIN KIT FOR E80, E85 (90 minute assembly time)	\$ _____

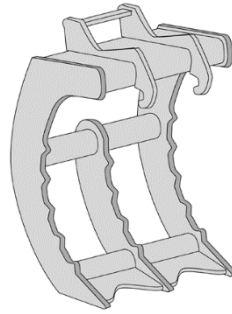
DESTINATION CHARGE/FUEL SURCHARGE
Refer to BobQuote or BobcatNET>>Other Resources>>Pricing Homepage for current Destination and Fuel Charges.

ATTACHMENT	ASSEMBLY REQUIRED	INSTALLATION TIME (HRS.)
------------	-------------------	--------------------------

Case Drain Kit	Installation	1.5
----------------------	--------------------	------------

GRAPPLE, 3-TINE

BOBCAT EXCAVATOR ATTACHMENT



QUICK SPECS

	<u>Grapple, Class III</u>	<u>Grapple, Class IV</u>
Operating Weight.....	200 lbs.	225 lbs.
Grapple Width.....	20.5"	20.5"
Tine Radius	27.0"	33.0"
Tine Thickness	0.75"	0.75"

PART NUMBER	ATTACHMENT DESCRIPTION	SLP IN US \$
(325, 328, 329, 331, 334, 425, 430) (E26, E32, E35)		
7102977	3-TINE GRAPPLE, CLASS III (X-Change System Required) (Hydraulic Clamp is recommended when using 3-Tine Grapple)	\$702.00
(335, 337, 341, 435) (E42, E45, E50, E55, E60, E63)		
6817104	3-TINE GRAPPLE, CLASS IV (X-Change System Required) (Hydraulic Clamp is recommended when using 3-Tine Grapple)	\$755.00

DESTINATION CHARGE/FUEL SURCHARGE

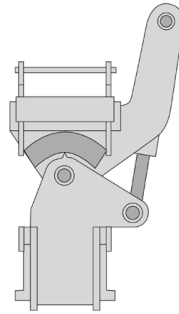
Refer to BobQuote or BobcatNET>>Other Resources>>Pricing Homepage for current Destination and Fuel Charges.

ATTACHMENT	ASSEMBLY REQUIRED	INSTALLATION TIME (HRS.)
------------	-------------------	--------------------------

3-Tine Grapple.....	None.....	-
---------------------	-----------	---

HYDRA-TILT

BOBCAT EXCAVATOR ATTACHMENT



QUICK SPECS

Operating Weight 250 lbs.
 Width 17.5"
 Length 31"
 Side-to-Side Rotation 60°
 Output Torque 3,210 ft-lbs. @ 3000 psi

PART NUMBER	ATTACHMENT DESCRIPTION	SLP IN US \$
-------------	------------------------	--------------

(325, 328, 329, 331, 331E, 334, 335, 337, 341, 425, 430, 435)
 (E26, E32, E35, E42, E45, E50, E55, E60, E63)

6728578	HYDRA-TILT (Must also order Hose Kit below) (Must also order Auxiliary Hydraulics p/n 7126596 if using with 329 excavator) (Not compatible with E42-E55 Pro Clamp™)	\$2,112.00
---------	--	------------

NOTE: Extendable Arm must be pinned in the retracted position to use hydraulic attachments.

PART NUMBER	DEALER INSTALLED ACCESSORIES – ORDER FROM SALES DESCRIPTION	SLP IN US \$
-------------	---	--------------

(325, 329, 331, 331E, 425, 430) (E26, E32, E35, E60, E63)

6729174	EXCAVATOR HOSE KIT (This hose kit must be used on above excavators when using a Hydra-Tilt)	\$203.00
---------	--	----------

(328, 334, 335, 337, 430 Long Arm, 435) (E42, E45, E50)
 (E26, E32, E35, E42 E45 – All with Long Arm)

6729175	EXCAVATOR HOSE KIT (This hose kit must be used on above excavators when using a Hydra-Tilt)	\$214.00
---------	--	----------

(341 Long Arm, 435 Long Arm, E50 Long Arm, E55)

6729176	EXCAVATOR HOSE KIT (This hose kit must be used on above excavators when using a Hydra-Tilt)	\$224.00
---------	--	----------

DESTINATION CHARGE/FUEL SURCHARGE

Refer to BobQuote or BobcatNET>>Other Resources>>Pricing Homepage for current Destination and Fuel Charges.

ATTACHMENT	ASSEMBLY REQUIRED	INSTALLATION TIME (HRS.)
------------	-------------------	--------------------------

Hydra-Tilt.....	Install Hoses50
-----------------	---------------------	-----

LASER EQUIPMENT

BOBCAT EXCAVATOR ATTACHMENT

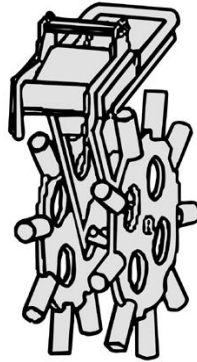
DEALER INSTALLED ACCESSORIES – ORDER FROM SALES		
PART NUMBER	DESCRIPTION	SLP IN US \$
(322, 323, 325, 328, 329, 331, 331E, 334, 335, 337, 341, 425, 430, 435, 442) (E26, E32, E35, E42, E45, E50, E55, E60, E63, E80, E85)		
7120486	LASER RECEIVER, CR600 (Can be used as handheld, machine, or rod-mounted laser receiver) (Includes magnetic mount for machines and clamp mount for grader rod)	\$467.00
7275232	LASER TRANSMITTER, DUAL SLOPE (Trimble GL422; Includes CR600 Receiver)	\$2,639.00
6688806	TRIPOD	\$264.00

DESTINATION CHARGE/FUEL SURCHARGE

Refer to BobQuote or BobcatNET>>Other Resources>>Pricing Homepage for current Destination and Fuel Charges.

PACKER WHEEL

BOBCAT EXCAVATOR ATTACHMENT



QUICK SPECS

Operating Weight.....	386 lbs.
Width.....	11.0"
Length.....	39.8"
Wheel Assembly.....	2
Wheel Diameter.....	30.0"
Sheepfoot (hollow tube).....	18 (9 per wheel)

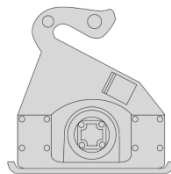
PART NUMBER	ATTACHMENT DESCRIPTION	SLP IN US \$
(325, 328, 329, 331, 331E, 334, 335, 337, 341, 425, 430, 435) (E26, E32, E35, E42, E45, E50, E55, E60, E63)		
6806644	PACKER WHEEL.....	\$2,175.00

DESTINATION CHARGE/FUEL SURCHARGE
 Refer to BobQuote or BobcatNET>>Other Resources>>Pricing Homepage for current Destination and Fuel Charges.

ATTACHMENT	ASSEMBLY REQUIRED	INSTALLATION TIME (HRS.)
Packer Wheel.....	None.....	-

PLATE COMPACTOR

BOBCAT EXCAVATOR ATTACHMENT



QUICK SPECS

	<u><i>PCF34</i></u>	<u><i>PCF64</i></u>
Operating Weight.....	478 lbs.	856 lbs.
Width	18.75"	23.5"
Length	26.0"	34.2"
Dynamic Force.....	3400 lbs.	6400 lbs.
Frequency.....	2100 VPM	2000 VPM
Minimum Flow	12 GPM	12 GPM
Maximum Flow.....	28 GPM	28 GPM

PART NUMBER	ATTACHMENT DESCRIPTION	SLP IN US \$
-------------	------------------------	--------------

(E32, E35, E42, E45, E50, E55, E60, E63)

7211623	PCF34 PLATE COMPACTOR	\$5,088.00
	(Must also order X-Change Mounting Cap and Hose Kit)	

(E55, E60, E63, E80, E85)

7210256	PCF64 PLATE COMPACTOR	\$5,874.00
	(Must also order Mounting Cap and Hose Kit)	

NOTE: Extendable Arm must be pinned in the retracted position to use hydraulic attachments.

PART NUMBER	DEALER INSTALLED ACCESSORIES – ORDER FROM SALES DESCRIPTION	SLP IN US \$
-------------	---	--------------

Mounting Frame – PCF34

7113656	X-CHANGE MOUNTING CAP – E32, E35, E42, E45, E50, E55, E60, E63	\$467.00
	(Must also order a hose kit)	

Mounting Frame – PCF64

7210254	MOUNTING CAP – E80, E85 M-SERIES	\$651.00
	(Must also order a hose kit, mounting caps uses 45mm pins)	

7307178	MOUNTING CAP – E85 R-SERIES.....	\$634.00
	(Must also order a hose kit, mounting caps uses 55mm pins)	

7113657	X-CHANGE MOUNTING CAP – E55, E60, E63.....	\$482.00
	(Must also order a hose kit)	

Hose Kits – PCF34, PCF64

7217834	HOSE KIT – FOR E32, E35, E42, E45, E50 LONG ARMS & E55.....	\$219.00
	(Includes hoses and quick couplers)	

7217835	HOSE KIT FOR E32, E35, E42, E45, E50 STANDARD & EXTENDABLE ARM	\$203.00
	(Includes hoses and quick couplers)	

7217836	HOSE KIT – FOR E60, E63, E80, E85.....	\$286.00
	(Includes hoses and quick couplers)	

DESTINATION CHARGE/FUEL SURCHARGE

Refer to BobQuote or BobcatNET>>Other Resources>>Pricing Homepage for current Destination and Fuel Charges.

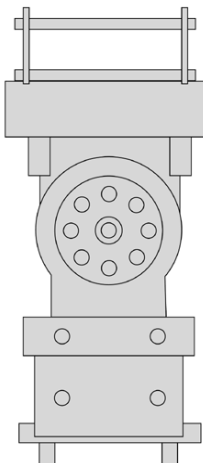
PLATE COMPACTOR
BOBCAT EXCAVATOR ATTACHMENT

ATTACHMENT	ASSEMBLY REQUIRED	INSTALLATION TIME (HRS.)
------------	-------------------	-----------------------------

Plate Compactor	Install Hoses and Mounting Cap	1.5
-----------------------	--------------------------------------	-----

POWER TILT®

BOBCAT EXCAVATOR ATTACHMENT



QUICK SPECS

	<u><i>PTX3</i></u>	<u><i>PTX4</i></u>
Operating Weight.....	170 lbs.	285 lbs.
Width.....	11"	11"
Length.....	25"	25"
Output Torque.....	2100 ft. lbs. @ 3000 psi	3250 ft. lbs. @ 3000 psi
Side-to-Side Rotation.....	178°	180°

PART NUMBER	ATTACHMENT DESCRIPTION	SLP IN US \$
-------------	------------------------	--------------

(325, 328, 329, 331, 331E, 334, 425, 430) (E26, E32, E35)		
7319636	PTX3 \$4,745.00 (Includes hoses & couplers) (Must also order Auxiliary Hydraulics p/n 7126596 if using with 329 excavator)	

NOTE: Extendable Arm must be pinned in the retracted position to use hydraulic attachments.

(335, 337, 341, 435) (E42, E45, E50, E55, E60, E63)		
7319637	PTX4 \$6,293.00 (Includes hoses & couplers) (Must also order Hose Kit below)	

PART NUMBER	DEALER INSTALLED ACCESSORIES – ORDER FROM SALES DESCRIPTION	SLP IN US \$
-------------	---	--------------

(325, 425) (E63, E26 Short Arm)		
7331054	EXCAVATOR HOSE KIT \$195.00 (This hose kit must be used on above excavators when using a Power Tilt)	
(329, 331, 331E, 430, 328, 335, 435) (E32/35 Short Arm, E32/35 Ext. Arm, E42/45 Ext Arm, E42/45 Short Arm, E26 Long Arm)		
7331055	EXCAVATOR HOSE KIT \$195.00 (This hose kit must be used on above excavators when using a Power Tilt)	
(334, 337, 430 Long Arm) (E50 Short Arm, E32/35 Long Arm, E55 Ext. Arm, E42/45 Long Arm)		
7331056	EXCAVATOR HOSE KIT \$198.00 (This hose kit must be used on above excavators when using a Power Tilt)	
(341 Long Arm, 435 Long Arm) (E55/50 Long Arm)		
7331057	EXCAVATOR HOSE KIT \$198.00 (This hose kit must be used on above excavators when using a Power Tilt)	

POWER TILT®
BOBCAT EXCAVATOR ATTACHMENT

DESTINATION CHARGE/FUEL SURCHARGE
Refer to BobQuote or BobcatNET>>Other Resources>>Pricing Homepage for current Destination and Fuel Charges.

ATTACHMENT	ASSEMBLY REQUIRED	INSTALLATION TIME (HRS.)
-------------------	--------------------------	---------------------------------

Power Tilt.....	None.....	-
-----------------	-----------	---

RIPPER

BOBCAT EXCAVATOR ATTACHMENT



Ripper with X-Change Mount



Ripper with Pin-On Mount

QUICK SPECS

	<u>Ripper with X-Change</u>	<u>Ripper with Pin-On</u>
Operating Weight	270 lbs.	255 lbs. (approx.)
Tooth Radius	36"	36"
Shank Thickness	1.5"	1.5"

PART NUMBER	ATTACHMENT DESCRIPTION	SLP IN US \$
-------------	------------------------	--------------

(E32, E35)		
7328289	RIPPER, 35 MM PINS	\$975.00
(E42, E45, E50, E55, E60, E63)		
7328290	RIPPER, 45 MM PINS	\$975.00
(E32, E35, E42, E45, E50, E55, E60, E63) with X-Change system		
7328288	RIPPER, X-CHANGE.....	\$990.00
(E80, E85 M-Series)		
7328287	RIPPER 45 MM PIN 8T	\$1,330.00
(E85 R-Series)		
7328286	RIPPER 55 MM PIN 8T	\$1,310.00

If using a pin grabber coupler order pin kits from below:

7329828	35 MM PIN KIT	PARTS
7328361	45 MM PIN KIT	PARTS
7328360	55 MM PIN KIT	PARTS

DESTINATION CHARGE/FUEL SURCHARGE

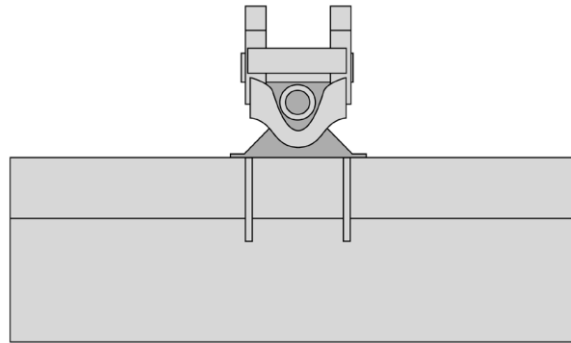
Refer to BobQuote or BobcatNET>>Other Resources>>Pricing Homepage for current Destination and Fuel Charges.

ATTACHMENT	ASSEMBLY REQUIRED	INSTALLATION TIME (HRS.)
------------	-------------------	--------------------------

RipperNone..... -

TILT BUCKET

BOBCAT EXCAVATOR ATTACHMENT



QUICK SPECS

Ship Weight 656 lbs. / 886 lbs.
 Mounting Pin-On
 Tilt (+/-) 45 degrees (Both)
 SAE Heaped Capacity 12.5 ft.³ / 9.99 ft.³

PART NUMBER	ATTACHMENT DESCRIPTION	SLP IN US \$
-------------	------------------------	--------------

PIN-ON BUCKET

(E80, E85) *Not compatible R-Series E85

7171901 48" Tilting Grade Bucket, No Teeth \$7,283.00

(E85R) *Not compatible with M-Series E80, E85

7325612 48" Tilting Grade Bucket, No Teeth \$7,283.00

DESTINATION CHARGE/FUEL SURCHARGE

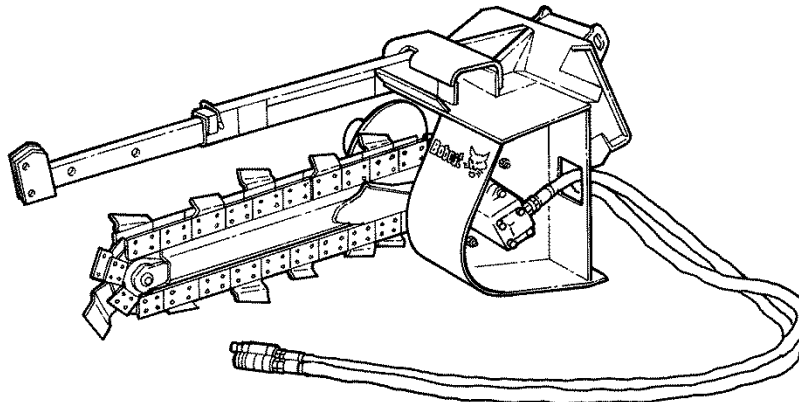
Refer to BobQuote or BobcatNET>>Other Resources>>Pricing Homepage for current Destination and Fuel Charges.

ATTACHMENT	ASSEMBLY REQUIRED	INSTALLATION TIME (HRS.)
------------	-------------------	--------------------------

Tilt Bucket None -

TRENCHER

BOBCAT EXCAVATOR ATTACHMENT



QUICK SPECS

Operating Weight (without teeth)	570 lbs.
Flow Range	13-20 gpm
Maximum Operating Pressure.....	3000 psi
Overall Width.....	30.6"
Overall Length	68.2"
Side Shift Travel	N/A
Auger Diameter.....	12"
Dig Depth.....	2'
Standard Boom Length	39.4"
Trenching Widths Available	4" to 8"

PART NUMBER	ATTACHMENT DESCRIPTION	SLP IN US \$
-------------	------------------------	--------------

(331, 331E, 334, 335, 337, 341, 430, 435) (E32, E35, E42, E45, E50, E55)

M7012	MX112 TRENCHER..... (Includes X-Change mounting frame, hoses, couplers, 2' depth, no sideshift) (Can only order one chain option per trencher model)	\$3,678.00
--------------	---	-------------------

NOTE: Extendable Arm must be pinned in the retracted position to use hydraulic attachments.

MX112 Chain Configuration Options (Factory Installed)

Chains are 1.654" Double Standard (DS) Anti-Back Flex (ABF)

M7012-R01-C02	2' X 4" CUP TEETH, SINGLE STANDARD PATTERN	\$474.00
M7012-R01-C01	2' X 4" CUP TEETH, DOUBLE STANDARD PATTERN	\$578.00
M7012-R01-C03	2' X 4" CUP & CARBIDE TEETH, DOUBLE STANDARD PATTERN	\$1,057.00

TRENCHER

BOBCAT EXCAVATOR ATTACHMENT

PART NUMBER	DEALER INSTALLED ACCESSORIES – ORDER FROM SALES	SLP IN US \$
PART NUMBER	DESCRIPTION	

MX112 Chain Configuration Accessories (Replacement Chain - Dealer Installed)
Chains are 1.654" Double Standard (DS) Anti-Back Flex (ABF)

6959315	2' X 4" CUP TEETH, SINGLE STANDARD PATTERN..... (Ship Weight 76 lbs.)	\$464.00
6959323	2' X 4" CUP TEETH, DOUBLE STANDARD PATTERN..... (Ship Weight 85 lbs.)	\$557.00
6959333	2' X 4" CUP & CARBIDE TEETH, DOUBLE STANDARD PATTERN..... (Ship Weight 91 lbs.)	\$1,052.00

PART NUMBER	DEALER INSTALLED ACCESSORIES – ORDER FROM PARTS	
PART NUMBER	DESCRIPTION	

For current Dealer Installed Accessories pricing, reference BobQuote or Dealer Parts Department.

6959248	BOOM GUIDE ASSEMBLY..... (Needed for 3' dig depth) (Also required (2) ¾" bolts # 84G3712 additional 1' chain, and additional teeth or order 3' chain configuration from LT112 accessories)	PARTS \$ _____
6705531	CARBIDE TOOTH KIT..... (Ship Weight 16 lbs.)	PARTS \$ _____
6701918	CUP TOOTH KIT..... (Ship Weight 13 lbs.)	PARTS \$ _____
6959302	DOUBLE STANDARD CHAIN..... (No teeth attached) (Ship Weight 1 lb.)	PARTS \$ _____
6959301	DOUBLE STANDARD CHAIN – 16P..... (For additional 1' dig depth)	PARTS \$ _____
7110909	SPACER KIT, 6"..... (Used with cup teeth for 6" width)	PARTS \$ _____
7110910	SPACER KIT, 8"..... (Used with cup teeth for 8" width)	PARTS \$ _____
6806974	TRENCH CLEANER ADAPTER, 6"..... (Used with Trench Cleaner Kit) (Ship Weight 3 lbs.)	PARTS \$ _____
6806975	TRENCH CLEANER ADAPTER, 8"..... (Used with Trench Cleaner Kit) (Ship Weight 4 lbs.)	PARTS \$ _____

DESTINATION CHARGE/FUEL SURCHARGE
Refer to BobQuote or BobcatNET>>Other Resources>>Pricing Homepage for current Destination and Fuel Charges.

ATTACHMENT	ASSEMBLY REQUIRED	INSTALLATION TIME (HRS.)
------------	-------------------	--------------------------

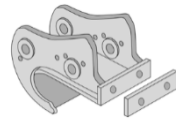
MX112	None.....	-
-------------	-----------	---

QUICK TACH KITS & COMPONENTS

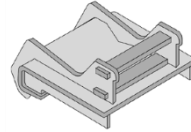
BOBCAT EXCAVATOR ATTACHMENT



Replacement
HD X-Change Kit



Bolt-On X-Change



X-Change Adapter
Mounting Frame



Wide Link

442 Coupler

PART NUMBER	ATTACHMENT DESCRIPTION	SLP IN US \$
-------------	------------------------	--------------

For current Attachment pricing, reference BobQuote or Dealer Parts Department.

(322, 323, 324, E20)

6727180 BOLT-ON X-CHANGE KIT SALES \$234.00
(Used to attach an auger to the 322 excavator)

(325, 328, 425)

7105177 REPLACEMENT HEAVY DUTY X-CHANGE KIT PARTS \$_____
(Utilizes pin retention system to secure attachment) (Replacement Heavy Duty X-Change assembly; 325G SN 234112006 & above, 328G SN 234211808 & above)
(Can also be used in conjunction with wide link PN 6805374 to convert latching X-Change excavators to HD X-Change)
(Ship Weight - 48 lbs.; Estimated Install Time 1 hrs.)

(325, 328)

6813306 X-CHANGE KIT (NON-CURRENT) PARTS \$_____
(Includes automatic latch retention system for attachment mounting)
(Ship Weight – 75 lbs.; Estimated Install Time 1.5 hrs.)

6805374 WIDE LINK..... PARTS \$_____
(Recommended when converting excavator from standard X-change to Heavy Duty X-Change)

6817828 BOLT-ON CONVERSION KIT, HEAVY DUTY X-CHANGE PARTS \$_____
(Includes hardware to secure a non-current latching S-Change attachment on a Heavy Duty X-Change excavator)

6736191 ATTACHMENT CONVERSION KIT, HEAVY DUTY X-CHANGE PARTS \$_____
(Used to convert non-current attachment interface to Heavy Duty pin retention system)

(329, 331, 331E, 334, 430)

7105177 REPLACEMENT HEAVY DUTY X-CHANGE KIT PARTS \$_____
(Utilizes pin retention system to secure attachment) (Replacement Heavy Duty X-Change assembly; 331 234313088 & above; 331E SN 234412008 & above; 334 234513077 & above; and 430 562911235 & above and 430 563011067 & above)
(Can also be used to convert pin-on 331 machines to current X-Change system)
(Can also be used in conjunction with wide link PN 6805374 to convert latching X-Change excavators to HD X-Change) (Ship Weight - 48 lbs.; Estimated Install Time 1 hrs.)

6813306 X-CHANGE KIT (NON-CURRENT) PARTS \$_____
(Includes automatic latch retention system for attachment mounting)
(Ship Weight – 75 lbs.; Estimated Install Time 1.5 hrs.)

6805374 WIDE LINK..... PARTS \$_____
(Recommended when converting excavator from latching X-change to Heavy Duty X-Change)

6817828 BOLT-ON CONVERSION KIT, HEAVY DUTY X-CHANGE PARTS \$_____
(Includes hardware to secure a non-current latching X-Change attachment on a Heavy Duty X-Change excavator)

6736191 ATTACHMENT CONVERSION KIT, HEAVY DUTY X-CHANGE PARTS \$_____
(Used to convert non-current attachment interface to Heavy Duty pin retention system)

(E26, E32, E35)

7178041 REPLACEMENT HEAVY DUTY X-CHANGE KIT SALES \$646.00
(Utilizes pin retention system to secure attachment) (Replacement X-Change assembly)
(Shipping Weight - 60 lbs.; Estimated Installation Time 1 hour)

QUICK TACH KITS & COMPONENTS

BOBCAT EXCAVATOR ATTACHMENT

PART NUMBER	ATTACHMENT DESCRIPTION	SLP IN US \$
-------------	------------------------	--------------

For current Attachment pricing, reference BobQuote or Dealer Parts Department.

(335)
6818270 **REPLACEMENT HEAVY DUTY X-CHANGE KIT** PARTS \$ ____
 (Utilizes pin retention system to secure attachment)(Ship Weight - 48 lbs) (Estimated Install Time 1 hrs.)

(337, 341, 435)
6818270 **REPLACEMENT HEAVY DUTY X-CHANGE KIT** PARTS \$ ____
 (Utilizes pin retention system to secure attachment)
 (Replacement Heavy Duty X-Change assembly; 337G, 341G and 435G)
 (Can also be used in conjunction with wide link PN 6805281 to convert latching X-Change excavators to HD X-Change) (Ship Weight - 48 lbs.; Estimated Install Time 1 hrs.)

6805281 **WIDE LINK**..... PARTS \$ ____
 (Used when converting latching X-change excavators to Heavy Duty X-Change)

6817828 **BOLT-ON CONVERSION KIT, HEAVY DUTY X-CHANGE** PARTS \$ ____
 (Includes hardware to secure a non-current latching X-Change attachment on a Heavy Duty X-Change excavator)

6736191 **ATTACHMENT CONVERSION KIT, HEAVY DUTY X-CHANGE** PARTS \$ ____
 (Used to convert non-current attachment interface to Heavy Duty pin retention system)

(325, 328, 329, 331, 331E, 334, 337, 341, 430, 435) (E32, E35, E42, E45, E50, E55, E60, E63)
6737698 **X-CHANGE ADAPTER MOUNTING FRAME**..... SALES **\$479.00**
 (Used to convert attachments to X-Change mounting system)
 (Cast X-Change welded to fab flat plate, welds to flat surface) (Not compatible with 12" pin-on bucket)
 (Ship Weight – 50 lbs.)

6807074 **X-CHANGE RELEASE TOOL**..... PARTS \$ ____
 (Replacement for lost or damaged tool on non-current latching X-Change systems)
 (Ship Weight – 3 lbs.)

(442)
7125318 **COUPLER, PIN GRABBER** SALES **\$2,232.00**
 (Compatible with attachment pin spacing of 10.8 inches) (If used with multiple attachments, must also order two each of 6690458 – Pin; 6690459 – Collar; 17C864 – Bolt; 4E8 – Washer; 61D8 - Nut from Parts for each additional attachment)

(E80, E85)
7171904 **COUPLER, PIN GRABBER** SALES **\$2,560.00**
 (Compatible with attachment pin spacing of 11.5 inches) (E80 to E80 attachments)

7171906 **COUPLER, PIN GRABBER** SALES **\$2,663.00**
 (Compatible with attachment pin spacing of 10.8 inches) (E80 to 442 attachments)

Kits are available for various pin sizes (Kit includes 2 pins, 2 bolts and 2 nuts). These pins must be used to couple additional attachments to the Pin Grabber Coupler.

7329828 **ATTACHMENT PIN KIT (35MM)** \$ ____
 For use with attachments that are used with the Pin-Grabber quick coupler.
 Applicable to 35mm pin diameter attachments only. Includes two pins and required hardware.
 Estimated Installation Time: 0.25 hr.

7328361 **ATTACHMENT PIN KIT (45MM)** \$ ____
 For use with attachments that are used with the Pin-Grabber quick coupler.
 Applicable to 45mm pin diameter attachments only. Includes two pins and required hardware.
 Estimated Installation Time: 0.25 hr.

7328360 **ATTACHMENT PIN KIT (55MM)** \$ ____
 For use with attachments that are used with the Pin-Grabber quick coupler.
 Applicable to 55mm pin diameter attachments only. Includes two pins and required hardware.
 Estimated Installation Time: 0.25 hr.